

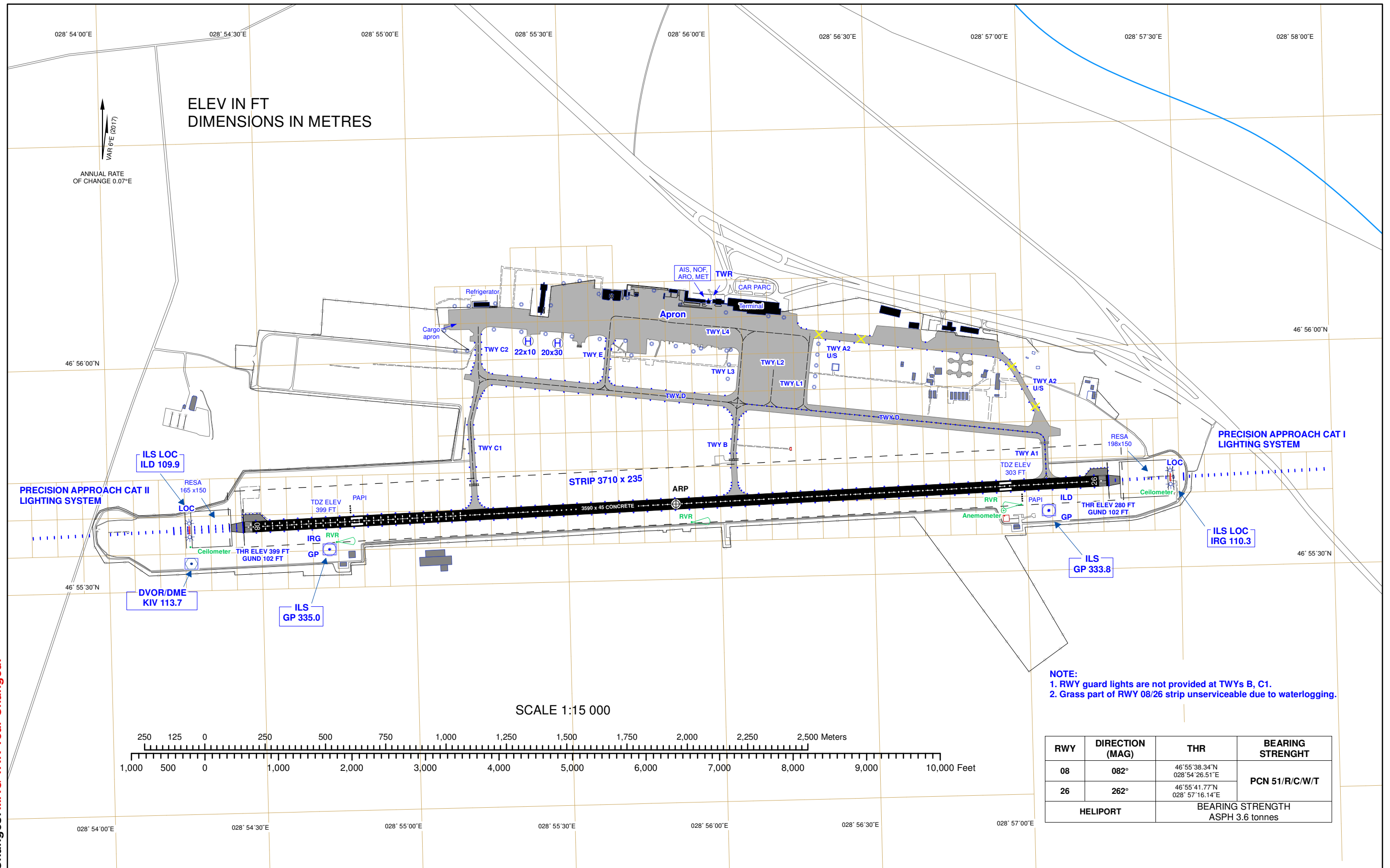
AD ELEVATION
399FT

TOWER: 118.100 MHz
GROUND: 121.800 MHz
APRON: 131.700 MHz

AERODROME CHART - ICAO

ARP: 46°55'40"N
028°55'51"E

**CHISINAU /
INTERNATIONAL**



Changes: **MAG VAR** Year Changed.

NOTE:
1. RWY guard lights are not provided at TWYs B, C1.
2. Grass part of RWY 08/26 strip unserviceable due to waterlogging.

RWY	DIRECTION (MAG)	THR	BEARING STRENGTH
08	082°	46°55'38.34"N 028°54'26.51"E	PCN 51/R/C/W/T
26	262°	46°55'41.77"N 028°57'16.14"E	
HELIPORT		BEARING STRENGTH ASPH 3.6 tonnes	

PAGE INTENTIONALLY LEFT BLANK