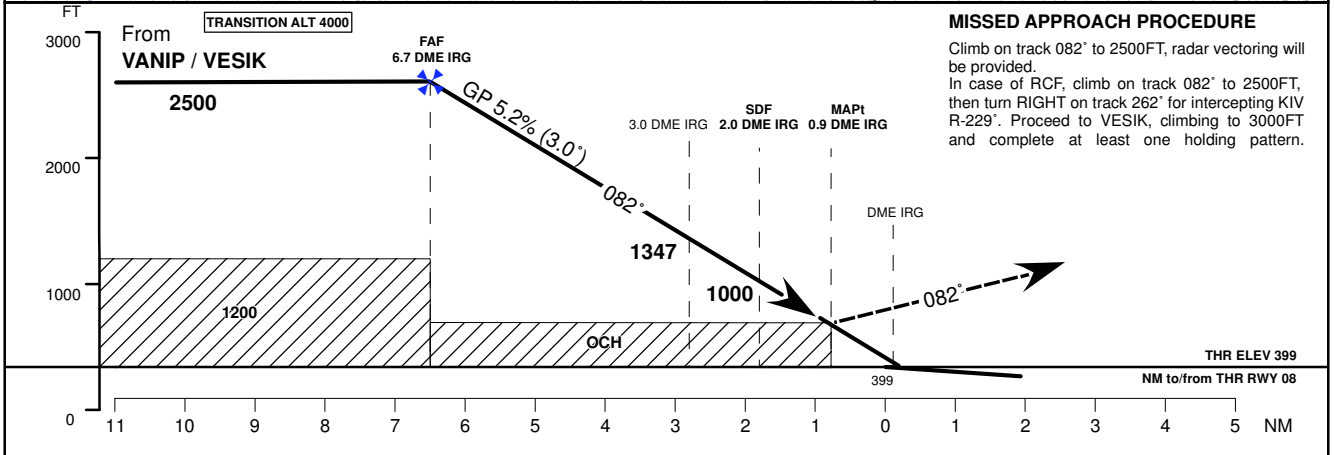
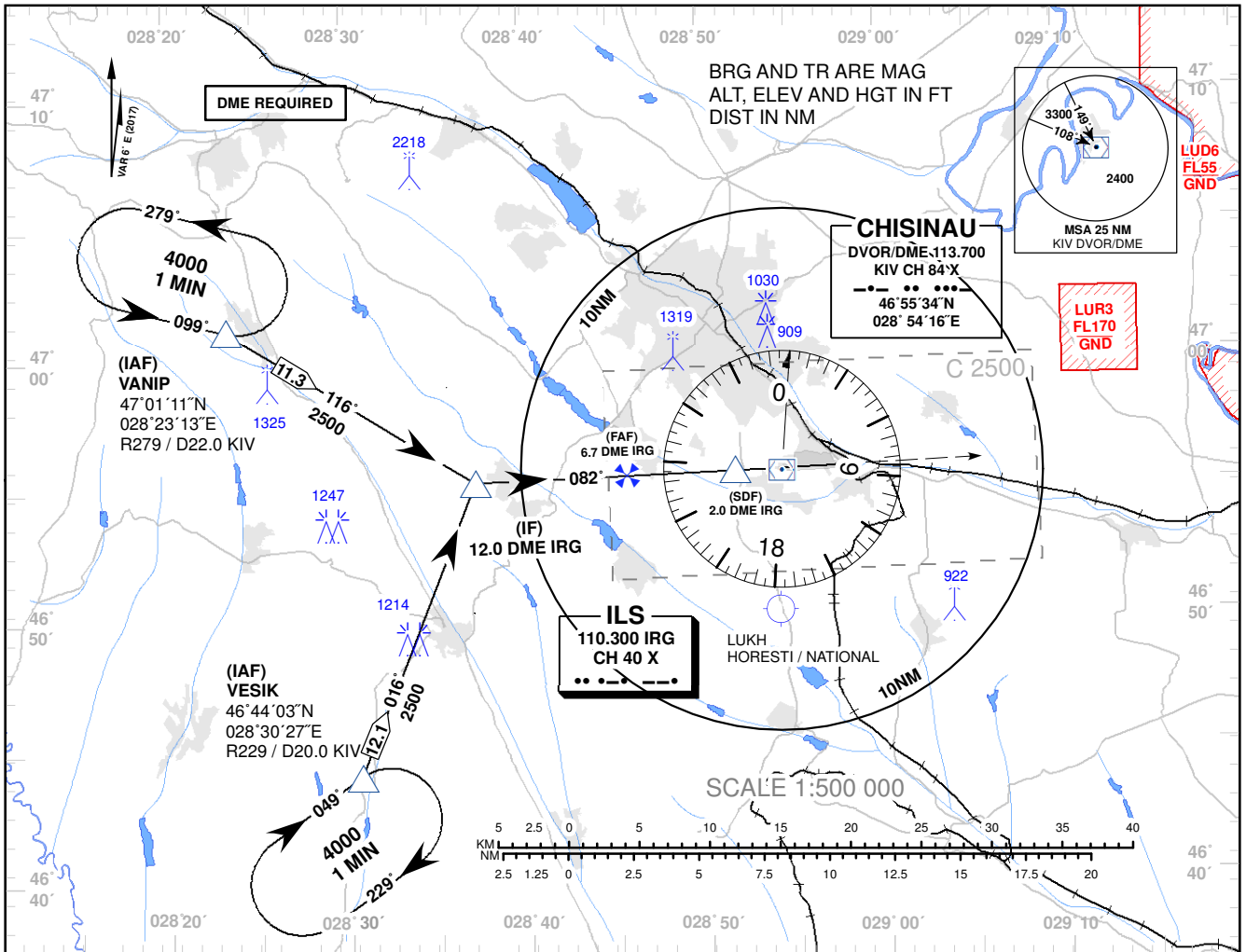


**INSTRUMENT APPROACH
CHART - ICAO**

AD ELEV 399 FT
HEIGHTS RELATED TO
THR RWY 08 ELEV 399 FT

APP: 133.300 MHz
TWR: 118.100 MHz
ATIS: 125.225 MHz

**CHISNAU
LOC RWY 08**



MISSED APPROACH PROCEDURE
Climb on track 082° to 2500FT, radar vectoring will be provided.
In case of RCF, climb on track 082° to 2500FT, then turn RIGHT on track 262° for intercepting KIV R-229°. Proceed to VESIK, climbing to 3000FT and complete at least one holding pattern.

OCA (OCH)	A	B	C	D
LOC	760 (360)			

DME IRG	7	6	5	4	3	2	1
DIST THR	6.8	5.8	4.8	3.8	2.8	1.8	0.8
ALTITUDE (Height)	2500 (2101)	2295 (1896)	1980 (1581)	1662 (1263)	1347 (948)	1032 (633)	714 (315)

Timing not Authorized for Defining the MAPt.

GS	kt	80	100	120	140	160	180
DISTANCE FAP-MAPt 5.8 NM	MIN:SEC	4:21	3:29	2:54	2:29	2:11	1:56
Rate of Descent (5.2%)	FT/MIN	400	500	600	710	800	900

Changes: MAG VAR Year Changed.

**INSTRUMENT APPROACH
CHART - ICAO**
**CHISINAU
LOC RWY 08**

AERONAUTICAL DATA TABULATION				
POINT	LATITUDE	LONGITUDE	BEARING GEO° (MAG°)	DISTANCE (NM)
IAF VANIP	470111.0N	0282313.0E	285.00° (279°) KIV	22.00 KIV
IAF VESIK	464403.0N	0283027.0E	235.00° (229°) KIV	20.00 KIV
IF	465514.8N	0283713.1E	088.29° (082°) IRG	12.02 DME IRG
FAF	465525.4N	0284457.7E	088.29° (082°) IRG	6.70 DME IRG
SDF	465534.4N	0285153.4E	088.29° (082°) IRG	1.97 DME IRG
MAPt	465536.3N	0285323.5E	088.29° (082°) IRG	0.91 DME IRG
Final approach descent angle: 3.00°				