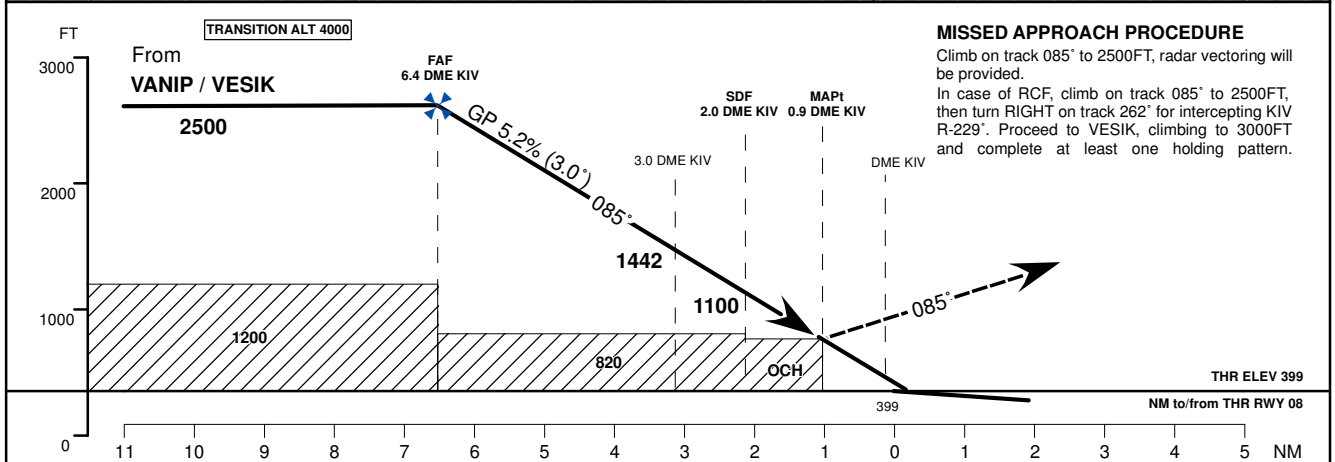
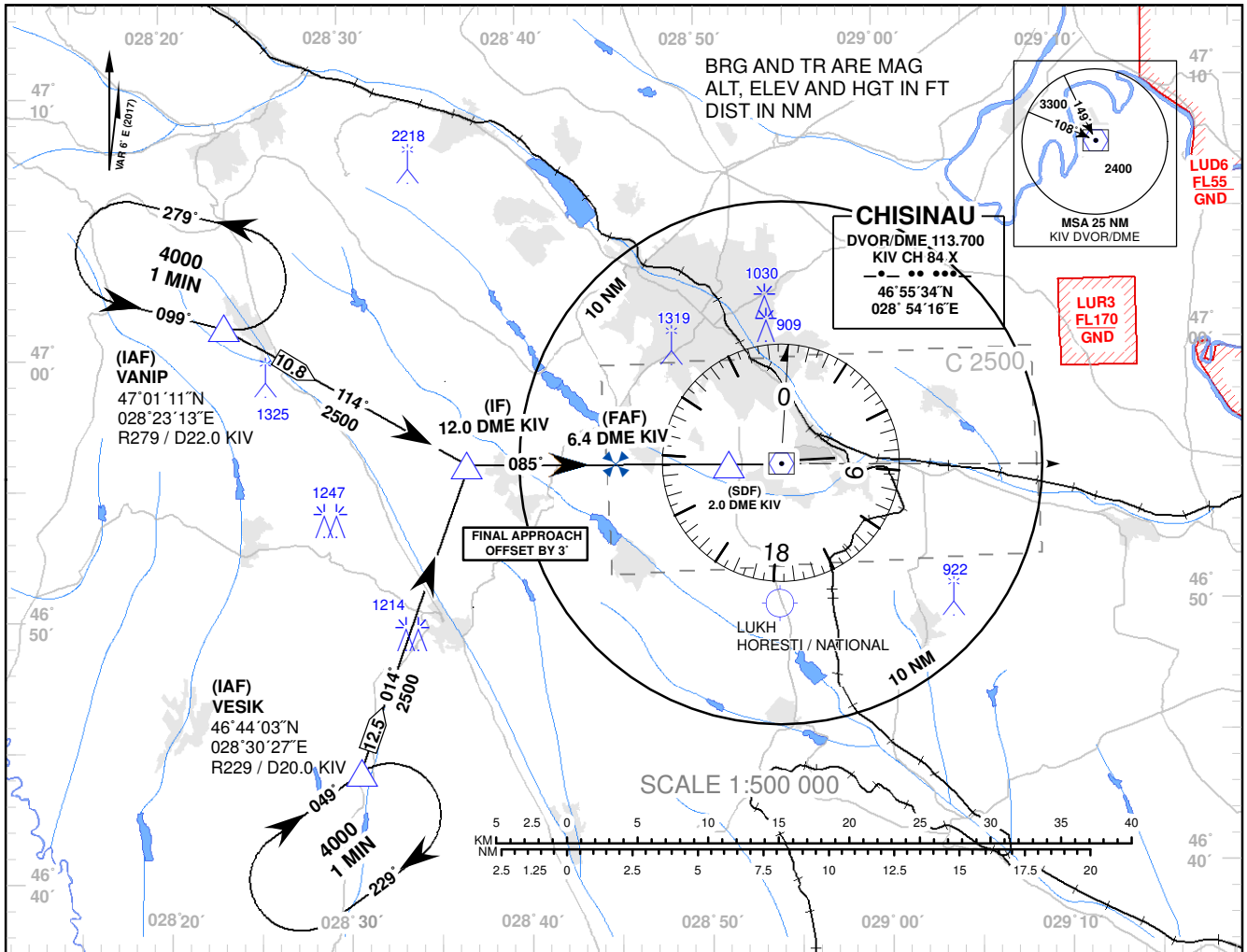


**INSTRUMENT APPROACH
CHART - ICAO**

AD ELEV 399 FT
HEIGHTS RELATED TO
THR RWY 08 ELEV 399 FT

APP: 133.300 MHz
TWR: 118.100 MHz
ATIS: 125.225 MHz

**CHISINAU
VOR/DME RWY 08**



MISSED APPROACH PROCEDURE
Climb on track 085° to 2500FT, radar vectoring will be provided.
In case of RCF, climb on track 085° to 2500FT, then turn RIGHT on track 262° for intercepting KIV R-229°. Proceed to VESIK, climbing to 3000FT and complete at least one holding pattern.

OCA (OCH)	A	B	C	D
VOR/DME	770 (370)			

DME KIV	7	6	5	4	3	2	1
DIST THR	7.1	6.1	5.1	4.1	3.1	2.1	1.1
ALTITUDE (Height)	2500 (2101)	2390 (1991)	2072 (1673)	1757 (1358)	1442 (1043)	1127 (728)	809 (410)

Timing not Authorized for Defining the MAPt.

GS	kt	80	100	120	140	160	180
DISTANCE FAP-MAPt 5.5 NM	MIN:SEC	4:08	3:18	2:45	2:21	2:04	1:50
Rate of Descent (5.2%)	FT/MIN	410	530	630	730	850	950

Changes: MAG VAR Year Changed.

**INSTRUMENT APPROACH
CHART - ICAO**
**CHISINAU
VOR/DME RWY 08**

AERONAUTICAL DATA TABULATION				
POINT	LATITUDE	LONGITUDE	BEARING GEO° (MAG°)	DISTANCE (NM)
IAF VANIP	470111.0N	0282313.0E	285.00° (279°) KIV	22.00 KIV
IAF VESIK	464403.0N	0283027.0E	235.00° (229°) KIV	20.00 KIV
IF	465544.9N	0283644.7E	091.00° (085°) KIV	12.01 DME KIV
FAF	465540.0N	0284458.1E	091.00° (085°) KIV	6.38 DME KIV
SDF	465535.7N	0285126.2E	091.00° (085°) KIV	1.94 DME KIV
MAPt	465534.6N	0285259.0E	091.00° (085°) KIV	0.88 DME KIV
Final approach descent angle: 3.00°				