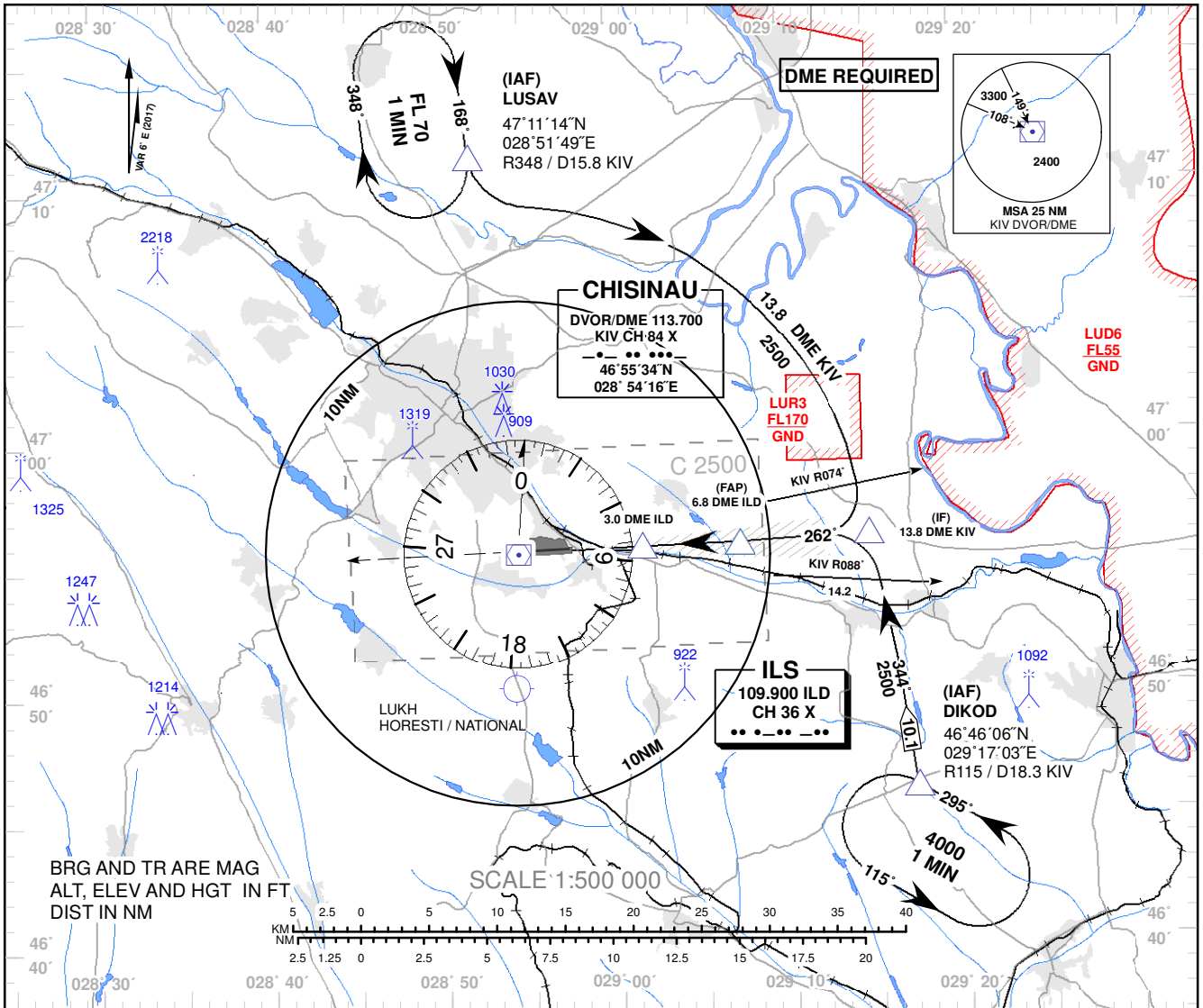


**INSTRUMENT APPROACH
CHART - ICAO**

AD ELEV 399 FT
HEIGHTS RELATED TO
THR RWY 26 ELEV 280 FT

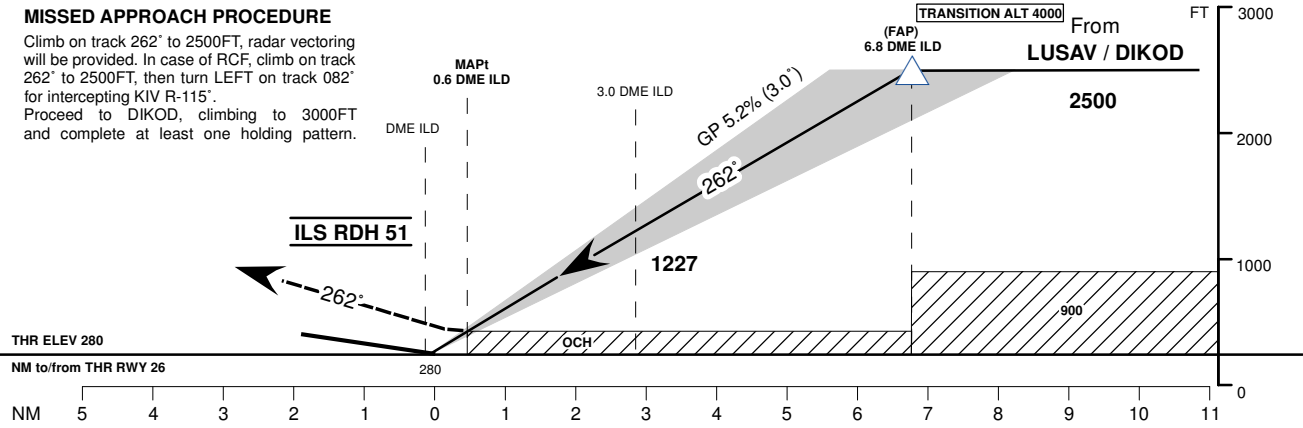
APP: 133.300 MHz
TWR: 118.100 MHz
ATIS: 125.225 MHz

**CHISINAU
ILS CAT I RWY 26**



MISSED APPROACH PROCEDURE

Climb on track 262° to 2500FT, radar vectoring will be provided. In case of RCF, climb on track 262° to 2500FT, then turn LEFT on track 082° for intercepting KIV R-115°. Proceed to DIKOD, climbing to 3000FT and complete at least one holding pattern.



OCA (OCH)	A	B	C	D
ILS CAT I	456 (177)	468 (189)	476 (197)	487 (208)

DME ILD	7	6	5	4	3	2	1
DIST THR	6.8	5.8	4.8	3.8	2.8	1.8	0.8
ALTITUDE (Height)	2500 (2221)	2175 (1896)	1860 (1581)	1542 (1263)	1227 (948)	912 (633)	594 (315)

Timing not Authorized for Defining the MAPI.

GS	kt	80	100	120	140	160	180
DISTANCE FAP-MAPI 6.2 NM	MIN: SEC	4:39	3:43	3:06	2:39	2:20	2:04
Rate of Descent (5.2%)	FT/MIN	430	540	650	760	870	960

Changes: MAG VAR Year Changed.

INSTRUMENT APPROACH
CHART - ICAOCHISINAU
ILS CAT I RWY 26

AERONAUTICAL DATA TABULATION				
POINT	LATITUDE	LONGITUDE	BEARING GEO° (MAG°)	DISTANCE (NM)
IAF LUSAV	471114.0N	0285149.0E	354.00° (348°) KIV	15.80 KIV
IAF DIKOD	464606.0N	0291703.0E	121.00° (115°) KIV	18.28 KIV
IF	465600.9N	0291423.8E	268.24° (262°) KIV	13.81 DME KIV
FAP	465553.0N	0290701.7E	268.33° (262°) ILD	6.83 DME ILD
MAPt	465542.6N	0285759.1E	268.33° (262°) ILD	0.63 DME ILD