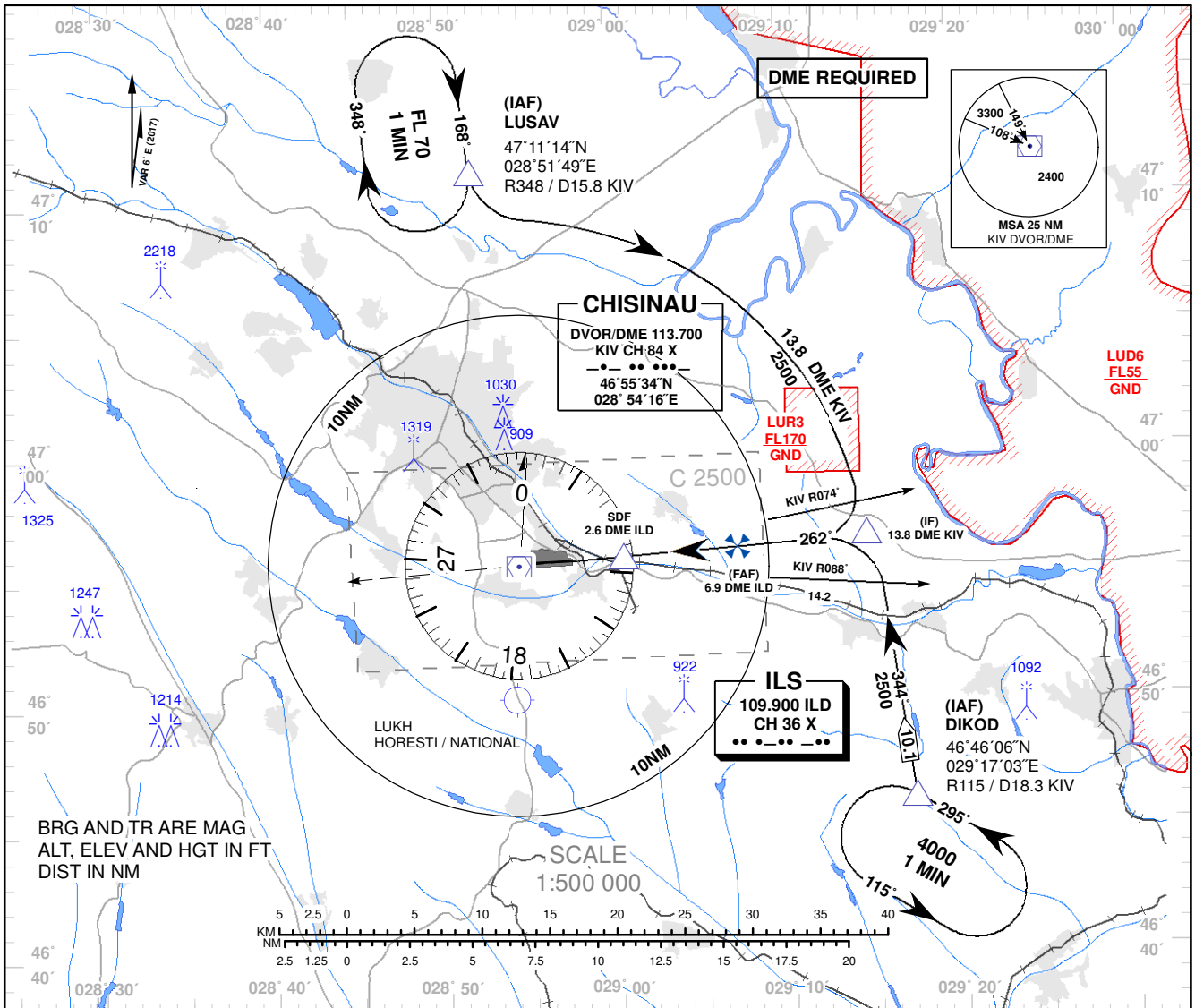


INSTRUMENT APPROACH CHART - ICAO

AD ELEV 399 FT
 HEIGHTS RELATED TO
 THR RWY 26 ELEV 280 FT

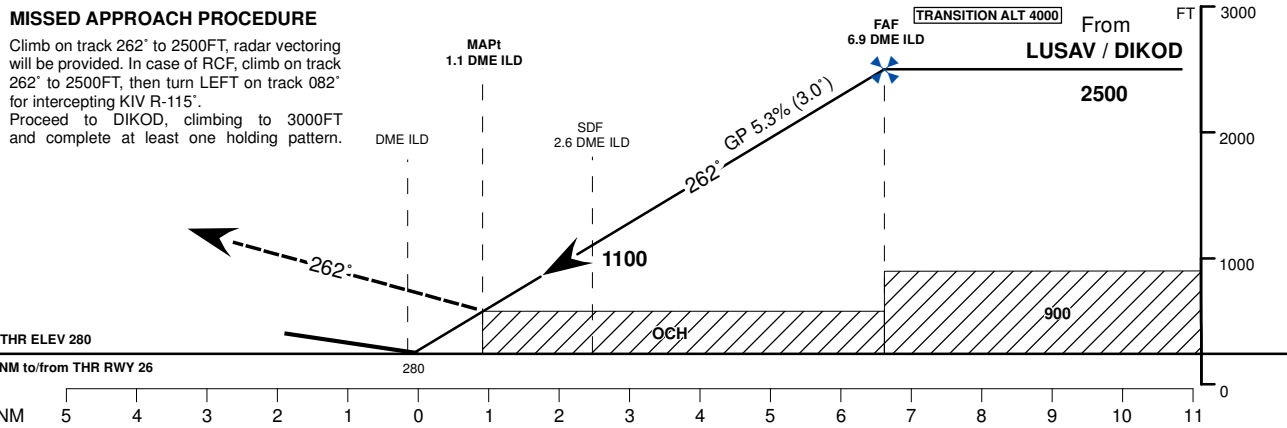
APP: 133.300 MHz
 TWR: 118.100 MHz
 ATIS: 125.225 MHz

**CHISINAU
 LOC RWY 26**



MISSED APPROACH PROCEDURE

Climb on track 262° to 2500FT, radar vectoring will be provided. In case of RCF, climb on track 262° to 2500FT, then turn LEFT on track 082° for intercepting KIV R-115°. Proceed to DIKOD, climbing to 3000FT and complete at least one holding pattern.



OCA (OCH)	A	B	C	D
LOC (GP INOP)	650 (380)	650 (380)	650 (380)	650 (380)

DME ILD	7	6	5	4	3	2	1
DIST THR	6.8	5.8	4.8	3.8	2.8	1.8	0.8
ALTITUDE (Height)	2500 (2221)	2211 (1932)	1890 (1611)	1568 (1289)	1244 (965)	922 (643)	601 (322)

Timing not Authorized for Defining the MAPt.

GS	kt	80	100	120	140	160	180
DISTANCE FAF-MAPt 5.8 NM	MIN: SEC	4:21	3:29	2:54	2:29	2:11	1:56
Rate of Descent (5.3%)	FT/MIN	420	530	640	740	850	960

Changes: MAG VAR Year Changed.

**INSTRUMENT APPROACH
CHART - ICAO**
**CHISINAU
LOC RWY 26**

AERONAUTICAL DATA TABULATION				
POINT	LATITUDE	LONGITUDE	BEARING GEO° (MAG°)	DISTANCE (NM)
IAF LUSAV	471114.0N	0285149.0E	354.00° (348°) KIV	15.80 KIV
IAF DIKOD	464606.0N	0291703.0E	121.00° (115°) KIV	18.28 KIV
IF	465600.9N	0291424.7E	268.24° (262°) KIV	13.81 DME KIV
FAF	465553.1N	0290706.9E	268.33° (262°) ILD	6.89 DME ILD
SDF	465545.8N	0290046.2E	268.33° (262°) ILD	2.55 DME ILD
MAPt	465543.5N	0285843.7E	268.33° (262°) ILD	1.14 DME ILD
Final approach descent angle: 3.04°				