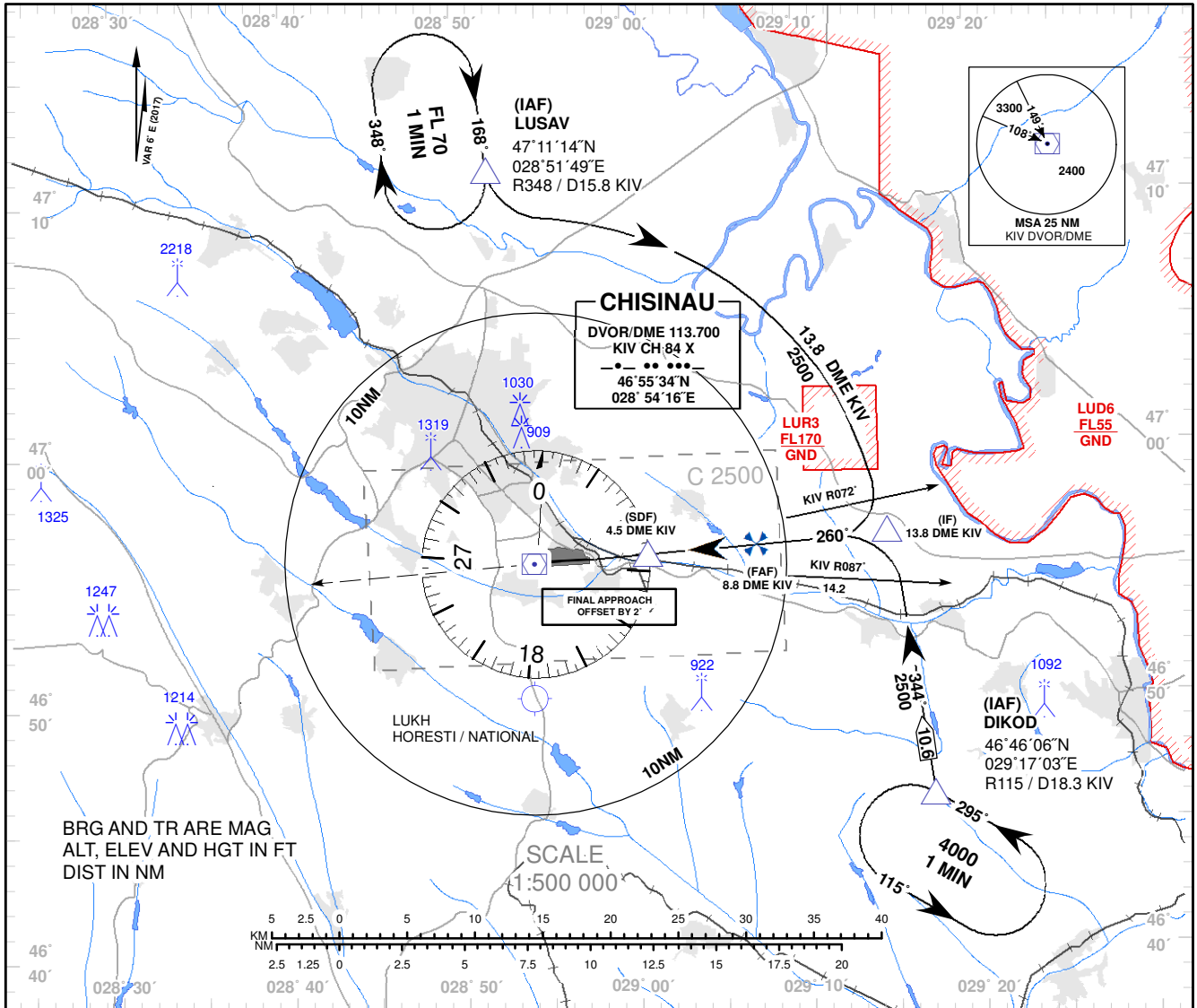


**INSTRUMENT APPROACH
CHART - ICAO**

AD ELEV 399 FT
HEIGHTS RELATED TO
THR RWY 26 ELEV 280 FT

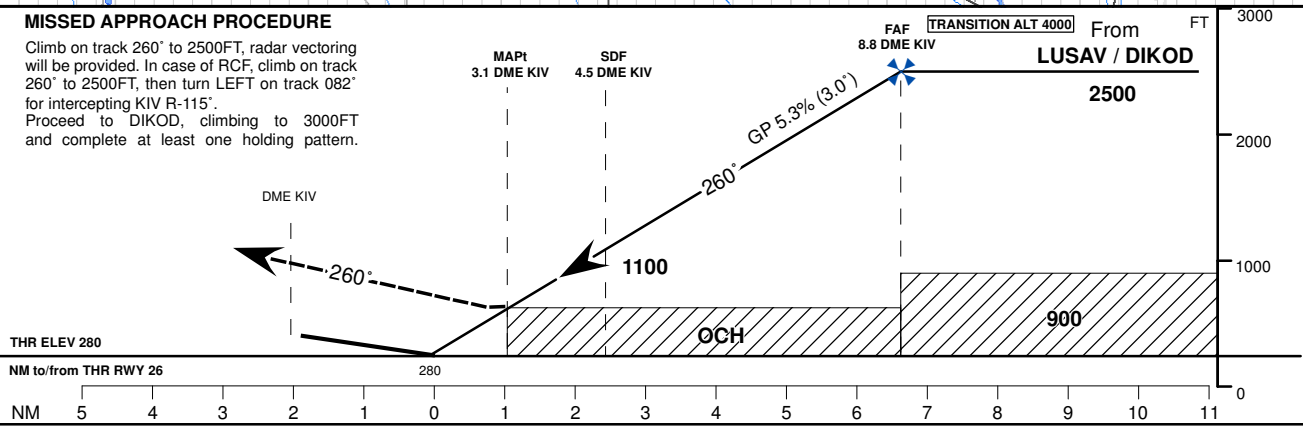
APP: 133.300 MHz
TWR: 118.100 MHz
ATIS: 125.225 MHz

**CHISINAU
VOR/DME RWY 26**



MISSED APPROACH PROCEDURE

Climb on track 260° to 2500FT, radar vectoring will be provided. In case of RCF, climb on track 260° to 2500FT, then turn LEFT on track 082° for intercepting KIV R-115°. Proceed to DIKOD, climbing to 3000FT and complete at least one holding pattern.



OCA (OCH)	A	B	C	D
DVOR/DME	690 (410)			

DME KIV	9	8	7	6	5	4	3
DIST THR	6.9	5.9	4.9	3.9	2.9	1.9	0.9
ALTITUDE (Height)	2500 (2221)	2244 (1965)	1923 (1644)	1598 (1319)	1276 (997)	955 (676)	633 (354)

Timing not Authorized for Defining the MAPt.

GS	kt	80	100	120	140	160	180
DISTANCE FAF-MAPt 5.8 NM	MIN: SEC	4:21	3:29	2:54	2:29	2:11	1:56
Rate of Descent (5.3%)	FT/MIN	420	530	640	740	850	960

Changes: MAG VAR Year Changed.

**INSTRUMENT APPROACH
CHART - ICAO**
**CHISINAU
VOR/DME RWY 26**

AERONAUTICAL DATA TABULATION				
POINT	LATITUDE	LONGITUDE	BEARING GEO° (MAG°)	DISTANCE (NM)
IAF LUSAV	471114.0N	0285149.0E	354.00° (348°) KIV	15.80 KIV
IAF DIKOD	464606.0N	0291703.0E	121.00° (115°) KIV	18.28 KIV
IF	465629.7N	0291422.7E	266.33° (260°) KIV	13.81 DME KIV
FAF	465609.8N	0290705.8E	266.33° (260°) KIV	8.81 DME KIV
SDF	465552.2N	0290045.7E	266.33° (260°) KIV	4.46 DME KIV
MAPt	465546.4N	0285843.5E	266.33° (260°) KIV	3.06 DME KIV
Final approach descent angle: 3.04°				