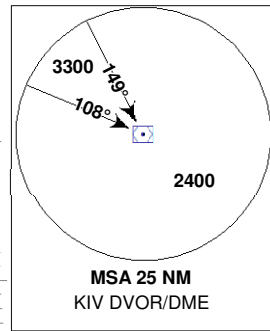


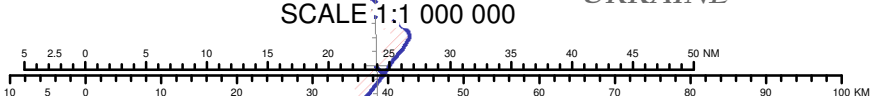
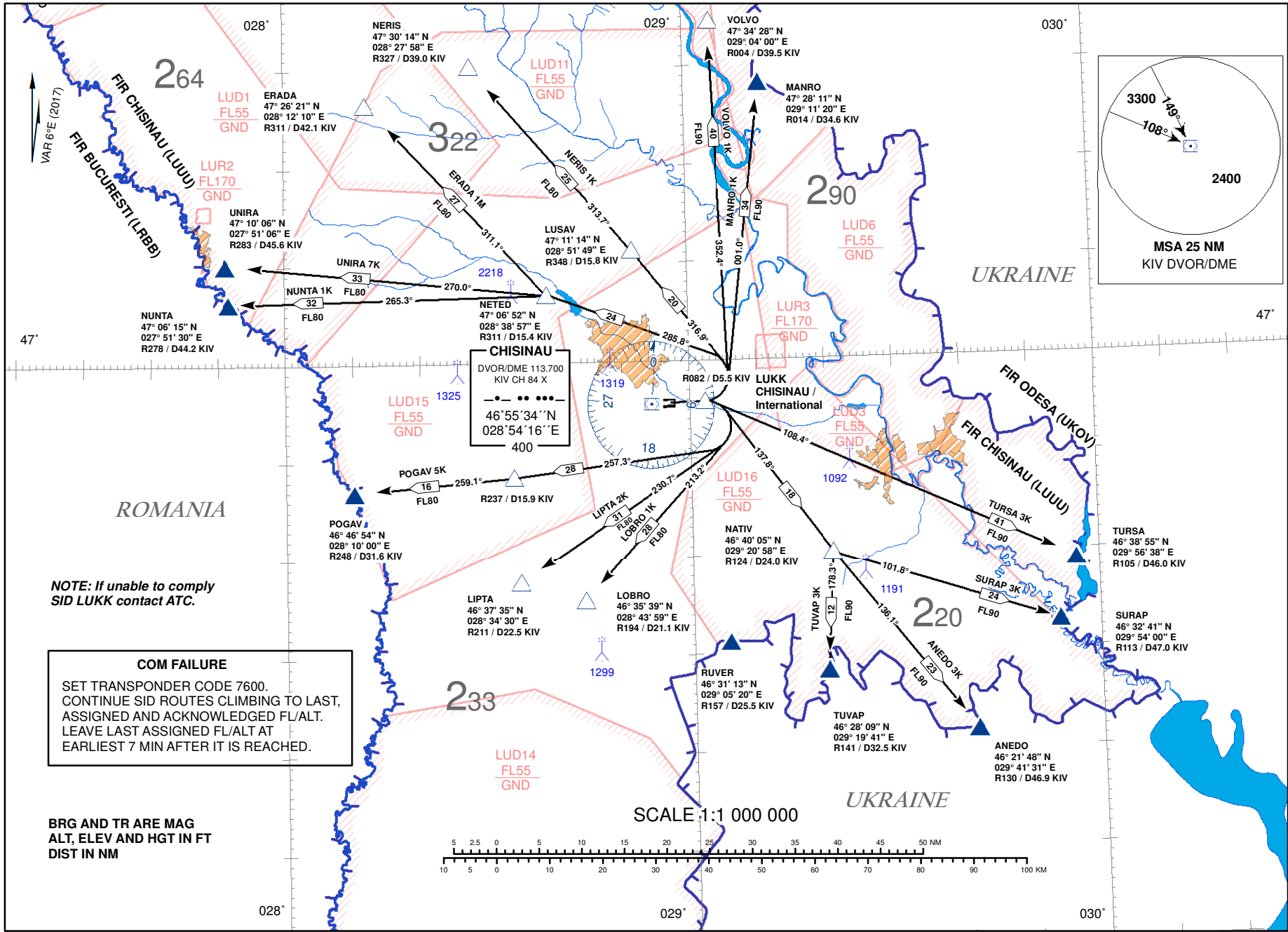
STANDARD DEPARTURE CHART - ALTITUDE 4000 FT
INSTRUMENT (SID) - ICAO

CONTROL: 128 975 MHz
APPROACH: 133 300 MHz
TWR: 118.100 MHz

CHISINAU/Int'l (LUKK)
RWY 08



Changes: **New Danger Area LUD16 Added.**



ROMANIA

UKRAINE

UKRAINE

NOTE: If unable to comply
SID LUKK contact ATC.

COM FAILURE

SET TRANSPONDER CODE 7600.
CONTINUE SID ROUTES CLIMBING TO LAST,
ASSIGNED AND ACKNOWLEDGED FL/ALT.
LEAVE LAST ASSIGNED FL/ALT AT
EARLIEST 7 MIN AFTER IT IS REACHED.

BRG AND TR ARE MAG
ALT, ELEV AND HGT IN FT
DIST IN NM

STANDARD DEPARTURE ROUTES -
INSTRUMENT (SID)CHISINAU/Intl (LUKK)
RWY 08

Designator	Route	After Take-off		Remarks
		Climb to	Contact	
ANEDO 3K	ANEDO THREE KILO Climb on Track 082° to 5.5 DME KIV , Right Turn on Track 137.8° to NATIV (△), Left Turn on Track 136.1° to ANEDO (▲).	FL90		Turn at 5.5 DME KIV is calculated with bank 20° and 240 kt IAS.
ERADA 1M	ERADA ONE MIKE Climb on Track 082° to 5.5 DME KIV , Left Turn on Track 285.8° to NETED (△), Right Turn on Track 311.1° to ERADA (△).	FL80		
LIPTA 2K	LIPTA TWO KILO Climb on Track 082° to 5.5 DME KIV , Right Turn on Track 230.7° to LIPTA (△).	FL80		
LOBRO 1K	LOBRO ONE KILO Climb on Track 082° to 5.5 DME KIV , Right Turn on Track 213.2° to LOBRO (△).	FL80		
MANRO 1K	MANRO ONE KILO Climb on Track 082° to 5.5 DME KIV , Left Turn on Track 001.0 ° to MANRO (▲).	FL90		
NERIS 1K	NERIS ONE KILO Climb on Track 082° to 5.5 DME KIV , Left Turn on Track 316.9° to LUSAV (△), Left Turn on Track 313.7° to NERIS (△).	FL80		
NUNTA 1K	NUNTA ONE KILO Climb on Track 082° to 5.5 DME KIV , Left Turn on Track 285.8° to NETED (△), Left Turn on Track 265.3 to NUNTA (▲).	FL80		
POGAV 5K	POGAV FIVE KILO Climb on Track 082° to 5.5 DME KIV , Right Turn on Track 257.3° to R237 / D15.9 KIV , Right Turn on Track 259.1° to POGAV (▲).	FL80		
SURAP 3K	SURAP THREE KILO Climb on Track 082° to 5.5 DME KIV , Right Turn on Track 137.8° to NATIV (△), Left Turn on Track 101.8° to SURAP (▲).	FL90		
TURSA 3K	TURSA THREE KILO Climb on Track 082° to 5.5 DME KIV , Right Turn on Track 108.4° to TURSA (▲).	FL90		
TUVAP 3K	TUVAP THREE KILO Climb on Track 082° to 5.5 DME KIV , Right Turn on Track 137.8° to NATIV (△), Right Turn on Track 178.3° to TUVAP (▲).	FL90		
UNIRA 7K	UNIRA SEVEN KILO Climb on Track 082° to 5.5 DME KIV , Left Turn on Track 285.8° to NETED (△), Left Turn on Track 270.0° to UNIRA (▲).	FL80		
VOLVO 1K	VOLVO ONE KILO Climb on Track 082° to 5.5 DME KIV , Left Turn on Track 352.4° to VOLVO (△).	FL90		