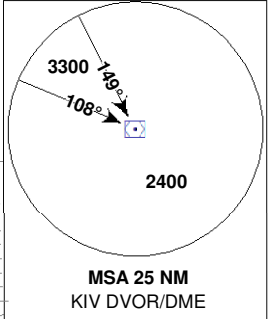
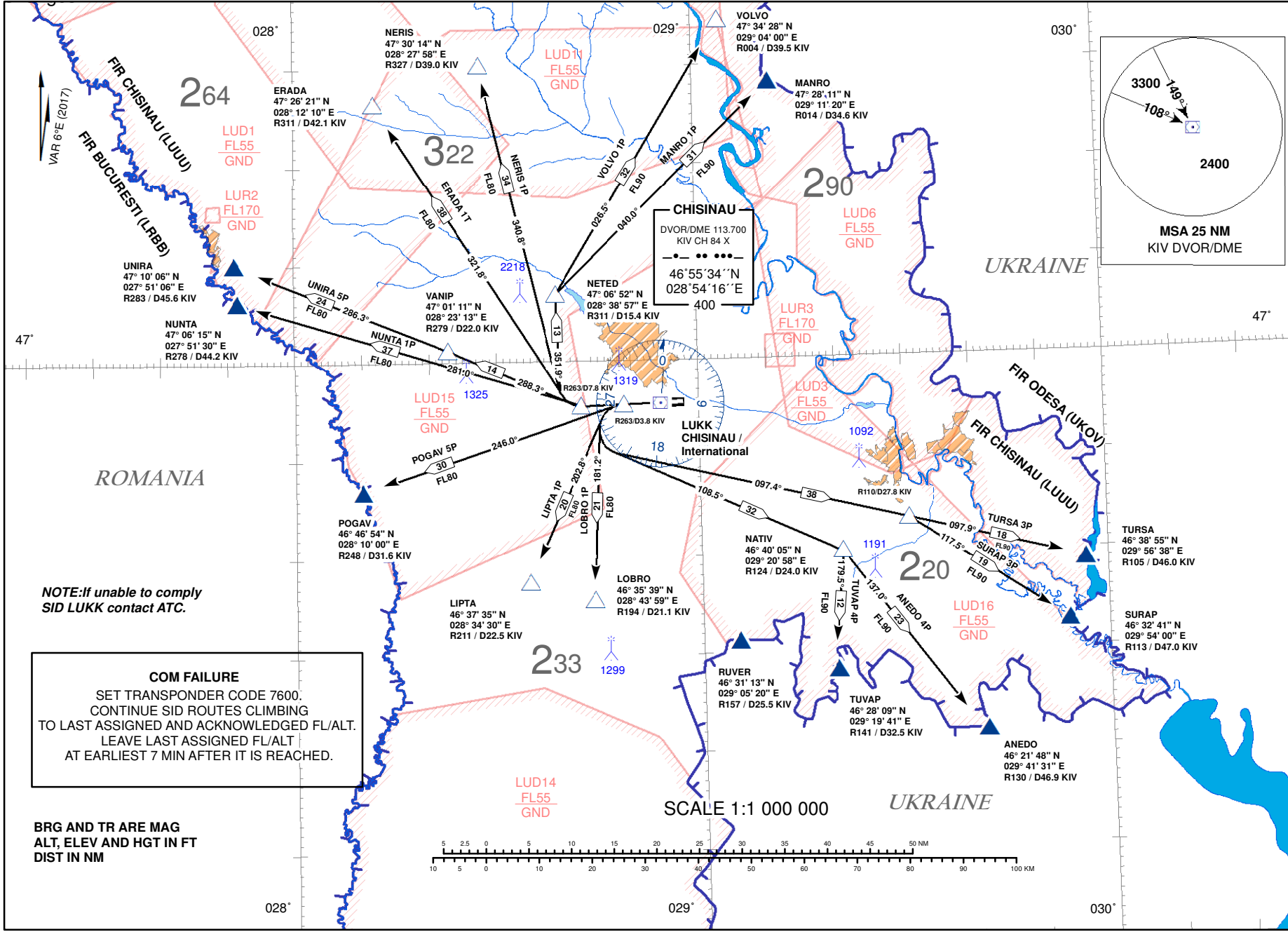


STANDARD DEPARTURE CHART - TRANSITION  
INSTRUMENT (SID) - ICAO ALTITUDE 4000 FT

CONTROL: 128.975 MHz  
APPROACH: 133.300 MHz  
TWR: 118.100 MHz

CHISINAU/Int'l (LUKK)  
RWY 26

Changes: **New Danger Area LUD16 Added.**



**NOTE: If unable to comply SID LUKK contact ATC.**

**COM FAILURE**  
SET TRANSPONDER CODE 7600.  
CONTINUE SID ROUTES CLIMBING  
TO LAST ASSIGNED AND ACKNOWLEDGED FL/ALT.  
LEAVE LAST ASSIGNED FL/ALT  
AT EARLIEST 7 MIN AFTER IT IS REACHED.

BRG AND TR ARE MAG  
ALT, ELEV AND HGT IN FT  
DIST IN NM

STANDARD DEPARTURE ROUTES -  
INSTRUMENT (SID)CHISINAU/Intl (LUKK)  
RWY 26

Designator	Route	After Take-off		Remarks
		Climb to	Contact	
ANEDO 4P	<b>ANEDO FOUR PAPA</b> Climb on Track 263° to 3.8 DME KIV, Left Turn on Track 108.5° to <b>NATIV</b> (△), Right Turn on Track 137.0° to <b>ANEDO</b> (▲).	FL90		Turns at 3.8 DME KIV and 7.8 DME KIV are calculated with bank 20° and 240 kt IAS.
ERADA 1T	<b>ERADA ONE TANGO</b> Climb on Track 263° to 7.8 DME KIV, Right Turn on Track 321.8° to <b>ERADA</b> (△).	FL80		
LIPTA 1P	<b>LIPTA ONE PAPA</b> Climb on Track 263° to 3.8 DME KIV, Left Turn on Track 202.8° to <b>LIPTA</b> (△).	FL80		
LOBRO 1P	<b>LOBRO ONE PAPA</b> Climb on Track 263° to 3.8 DME KIV, Left Turn on Track 181.2° to <b>LOBRO</b> (△).	FL80		
MANRO 1P	<b>MANRO ONE PAPA</b> Climb on Track 263° to 7.8 DME KIV, Right Turn on Track 351.9° to <b>NETED</b> (△), Right Turn on Track 040.0 ° to <b>MANRO</b> (▲).	FL90		
NERIS 1P	<b>NERIS ONE PAPA</b> Climb on Track 263° to 7.8 DME KIV, Right Turn on Track 340.8° to <b>NERIS</b>	FL80		
NUNTA 1P	<b>NUNTA ONE PAPA</b> Climb on Track 263° to 7.8 DME KIV, Right Turn on Track 281.0 ° to <b>NUNTA</b> (▲).	FL80		
POGAV 5P	<b>POGAV FIVE PAPA</b> Climb on Track 263° to 3.8 DME KIV, Left Turn on Track 246.0° to <b>POGAV</b> (▲).	FL80		
SURAP 3P	<b>SURAP THREE PAPA</b> Climb on Track 263° to 3.8 DME KIV, Left Turn on Track 097.4° to R110 / D27.8 KIV, Right Turn on Track 117.5° to <b>SURAP</b> (▲).	FL90		
TURSA 3P	<b>TURSA THREE PAPA</b> Climb on Track 263° to 3.8 DME KIV, Left Turn on Track 097.4° to R110 / D27.8 KIV, Right Turn on Track 097.9° to <b>TURSA</b> (▲).	FL90		
TUVAP 4P	<b>TUVAP FOUR PAPA</b> Climb on Track 263° to 3.8 DME KIV, Left Turn on Track 108.5° to <b>NATIV</b> (△), Right Turn on Track 179.5° to <b>TUVAP</b> (▲).	FL90		
UNIRA 5P	<b>UNIRA FIVE PAPA</b> Climb on Track 263° to 7.8 DME KIV, Right Turn on Track 288.3° to <b>VANIP</b> (△), Left Turn on Track 286.3° to <b>UNIRA</b> (▲).	FL80		
VOLVO 1P	<b>VOLVO ONE PAPA</b> Climb on Track 263° to 7.8 DME KIV, Right Turn on Track 351.9° to <b>NETED</b> (△), Right Turn on Track 026.5° to <b>VOLVO</b> (△).	FL90		