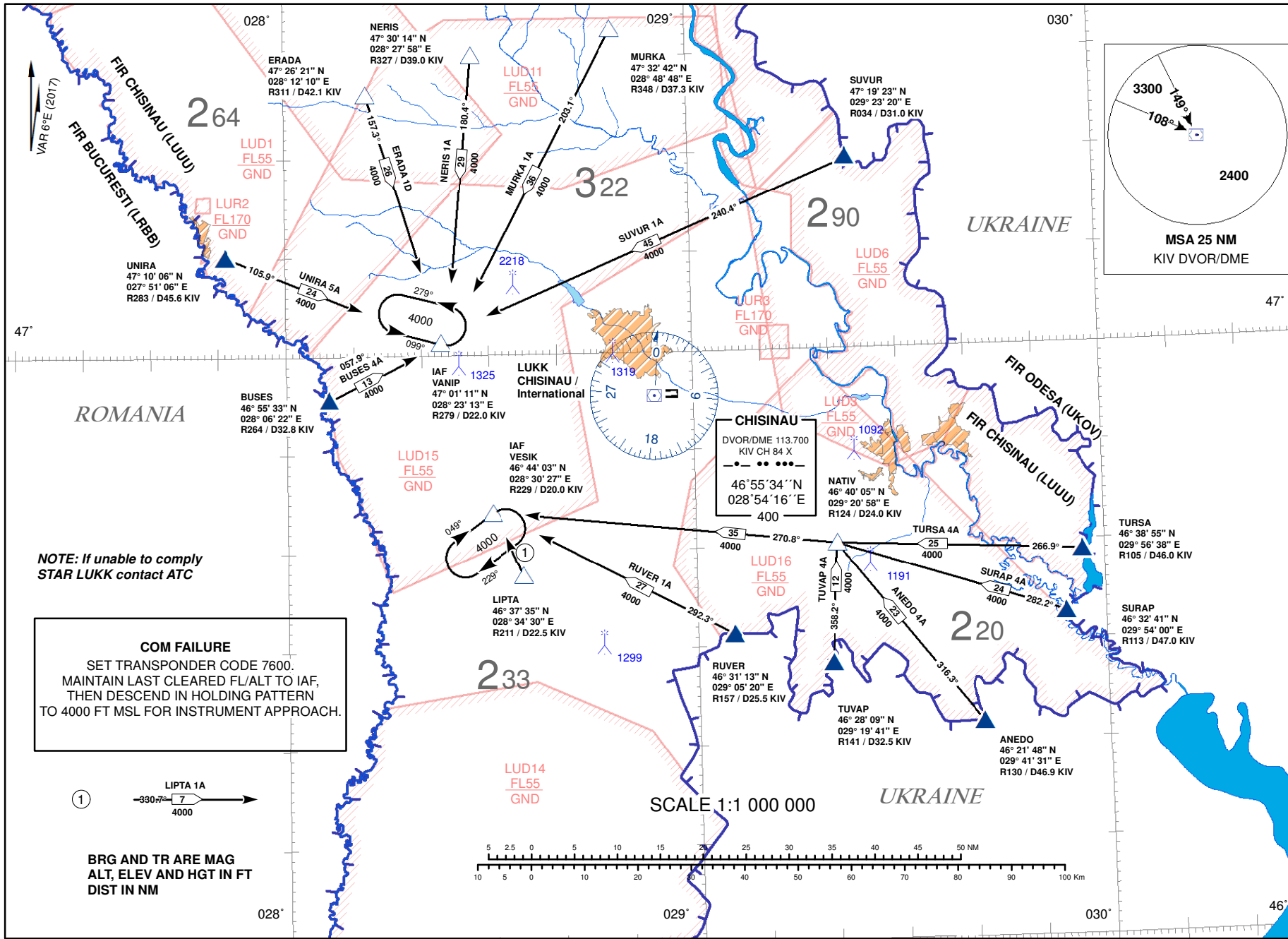


STANDARD ARRIVAL CHART -
INSTRUMENT (STAR) - ICAO
TRANSITION
ALTITUDE BY ATC

CONTROL 128.975 MHz
APPROACH 133.300 MHz
TOWER 118.100 MHz

CHISINAU/Int'l (LUKK)
RWY 08

Changes: **New Danger Area LUD16 Added.**



STANDARD ARRIVAL ROUTES -
INSTRUMENT (STAR)CHISINAU/Intl (LUKK)
RWY 08

Designator	Identification Significant Points	Mag Track	Dist NM	MNM Altitude FT	Remarks
ANEDO 4A	ANEDO FOUR ALPHA ▲ ANEDO △ NATIV △ VESIK			4000	
		316.3°	23		
		270.8°	35		
BUSES 4A	BUSES FOUR ALPHA ▲ BUSES △ VANIP			4000	
		057.9°	13		
ERADA 1D	ERADA ONE DELTA △ ERADA △ VANIP			4000	
		157.3°	26		
LIPTA 1A	LIPTA ONE ALPHA △ LIPTA △ VESIK			4000	
		330.7°	7		
MURKA 1A	MURKA ONE ALPHA △ MURKA △ VANIP			4000	
		203.1°	36		
NERIS 1A	NERIS ONE ALPHA △ NERIS △ VANIP			4000	
		180.4°	29		
RUVUR 1A	RUVUR ONE ALPHA △ RUVUR △ VESIK			4000	
		292.3°	27		
SURAP 4A	SURAP FOUR ALPHA ▲ SURAP △ NATIV △ VESIK			4000	
		282.2°	24		
		270.8°	35		
SUVUR 1A	SUVUR ONE ALPHA ▲ SUVUR △ VANIP			4000	
		240.4°	45		
TURSA 4A	TURSA FOUR ALPHA ▲ TURSA △ NATIV △ VESIK			4000	
		266.9°	25		
		270.8°	35		
TUVAP 4A	TUVAP FOUR ALPHA ▲ TUVAP △ NATIV △ VESIK			4000	
		358.2°	12		
		270.8°	35		
UNIRA 5A	UNIRA FIVE ALPHA ▲ UNIRA △ VANIP			4000	
		105.9°	24		