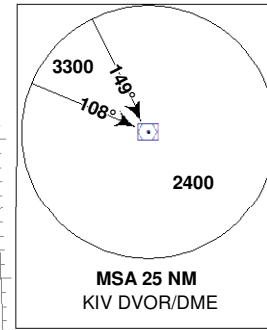


STANDARD ARRIVAL CHART - INSTRUMENT (STAR) - ICAO

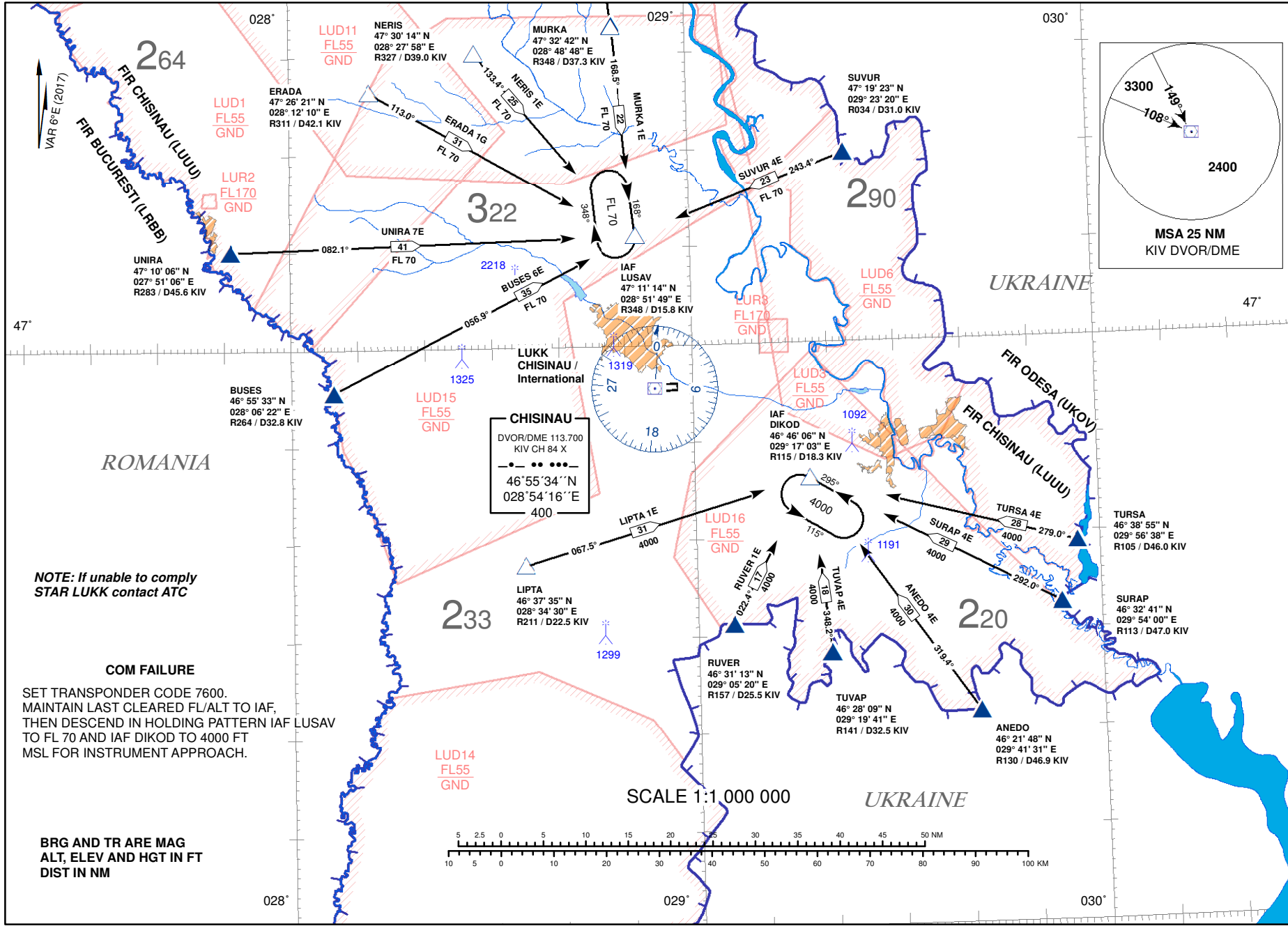
TRANSITION ALTITUDE BY ATC

CONTROL APPROACH TOWER 128.975 MHZ 133.300 MHZ 118.100 MHZ

CHISINAU/Int'l (LUKK) RWY 26



Changes: New Danger Area LUD16 Added.



CHISINAU DVOR/DME 113.700 KIV CH 84 X 46°55'34"N 028°54'16"E 400

NOTE: If unable to comply STAR LUKK contact ATC

COM FAILURE

SET TRANSPONDER CODE 7600. MAINTAIN LAST CLEARED FL/ALT TO IAF, THEN DESCEND IN HOLDING PATTERN IAF LUSAV TO FL 70 AND IAF DIKOD TO 4000 FT MSL FOR INSTRUMENT APPROACH.

BRG AND TR ARE MAG ALT, ELEV AND HGT IN FT DIST IN NM

STANDARD ARRIVAL ROUTES -
INSTRUMENT (STAR)CHISINAU/Intl (LUKK)
RWY 26

Designator	Identification Significant Points	Mag Track	Dist NM	MNM FL/Altitude FT	Remarks
ANEDO 4E	ANEDO FOUR ECHO ▲ ANEDO △ DIKOD	319.4°	30	4000	
BUSES 6E	BUSES SIX ECHO ▲ BUSES △ LUSAV	056.9°	35	FL70	
ERADA 1G	ERADA ONE GOLF △ ERADA △ LUSAV	113.0°	31	FL70	
LIPTA 1E	LIPTA ONE ECHO △ LIPTA △ DIKOD	067.5°	31	4000	
MURKA 1E	MURKA ONE ECHO △ MURKA △ LUSAV	168.5°	22	FL70	
NERIS 1E	NERIS ONE ECHO △ NERIS △ LUSAV	133.4°	25	FL70	
RUVUR 1E	RUVUR ONE ECHO ▲ RUVUR △ DIKOD	022.4°	17	4000	
SURAP 4E	SURAP FOUR ECHO ▲ SURAP △ DIKOD	292.0°	29	4000	
SUVUR 4E	SUVUR FOUR ECHO ▲ SUVUR △ LUSAV	243.4°	23	FL70	
TURSA 4E	TURSA FOUR ECHO ▲ TURSA △ DIKOD	279.0°	28	4000	
TUVAP 4E	TUVAP FOUR ECHO ▲ TUVAP △ DIKOD	348.2°	18	4000	
UNIRA 7E	UNIRA SEVEN ECHO ▲ UNIRA △ LUSAV	082.1°	41	FL70	