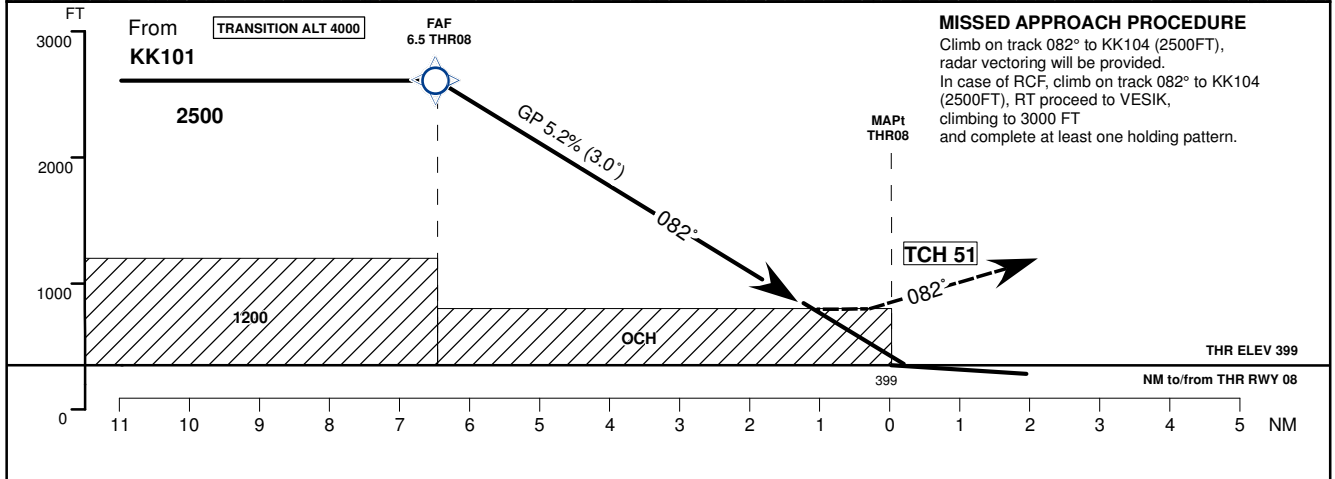
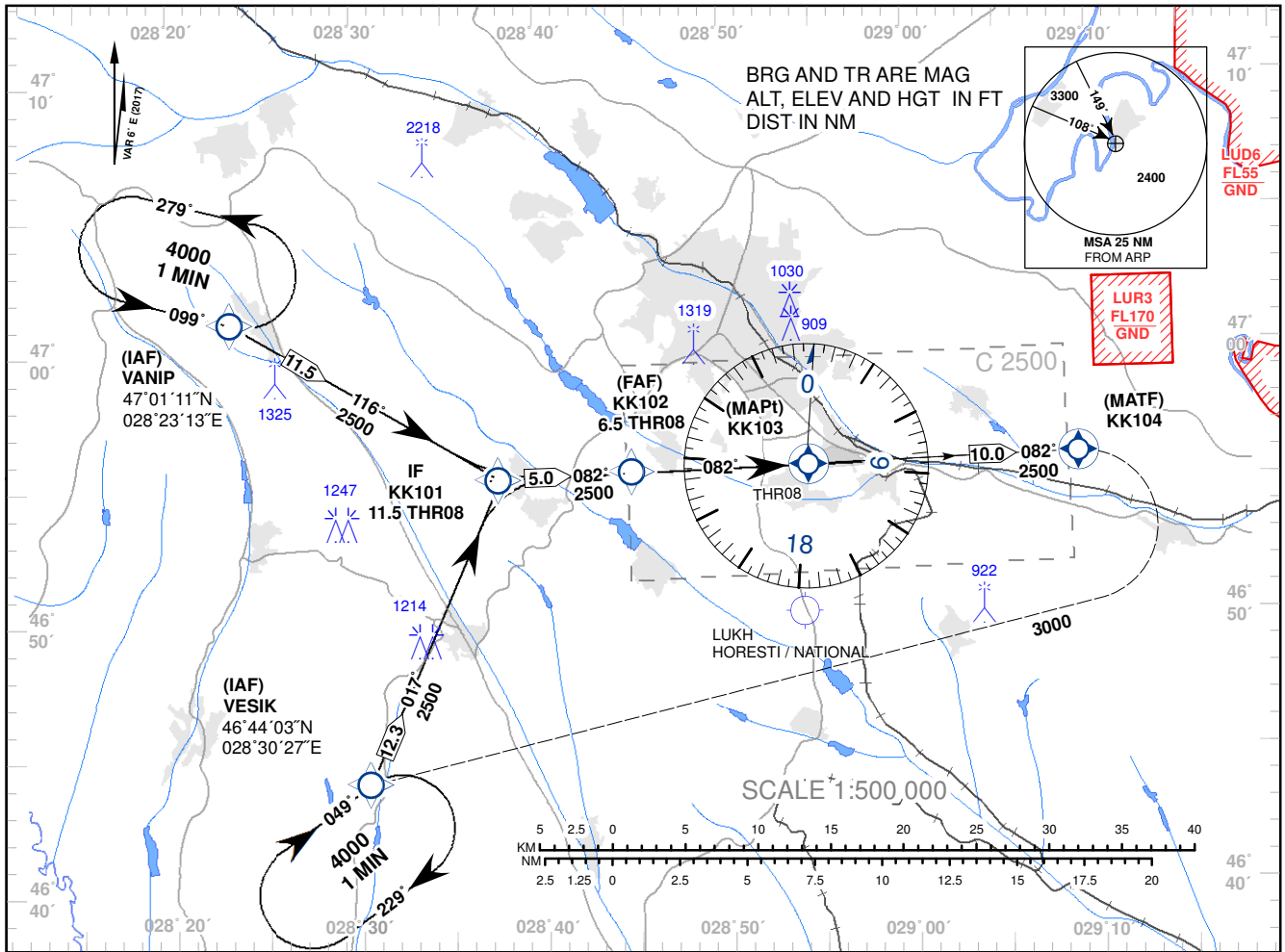


**INSTRUMENT APPROACH
CHART - ICAO**

AD ELEV 399 FT
HEIGHTS RELATED TO
THR RWY 08 ELEV 399 FT

APP: 133.300 MHz
TWR: 118.100 MHz
ATIS: 125.225 MHz

**CHISINAU
RNAV(GNSS) RWY 08**



MISSED APPROACH PROCEDURE
Climb on track 082° to KK104 (2500FT), radar vectoring will be provided.
In case of RCF, climb on track 082° to KK104 (2500FT), RT proceed to VESIK, climbing to 3000 FT and complete at least one holding pattern.

Changes: MAG VAR Year Changed.

OCA (OCH)	A	B	C	D
LNAV only	811 (412)	811 (412)	811 (412)	811 (412)

DIST THR	7	6	5	4	3	2	1
ALTITUDE (Height)	2500 (2101)	2346 (1947)	2031 (1632)	1713 (1314)	1395 (996)	1080 (681)	765 (366)

Timing not Authorized for Defining the MAPt.

Ground Speed	KT	80	100	120	140	160	180
DISTANCE FAF-MAPt 6.5 NM	MIN : SEC	4:52	3:54	3:15	2:47	2:26	2:10
Rate of Descent (5.2%)	FT / MIN	420	530	630	740	840	950

**INSTRUMENT APPROACH
CHART - ICAO**
**CHISINAU
RNAV(GNSS) RWY 08**

AERONAUTICAL DATA TABULATION				
POINT	LATITUDE	LONGITUDE	BEARING GEO° (MAG°)	DISTANCE (NM)
IAF VANIP	470111.0N	0282313.0E		
IAF VESIK	464403.0N	0283027.0E		
IF KK101	455516.5N	0283740.7E	088.29° (082°)	11.49 THR08
FAF KK102	465526.3N	0284458.2E	088.29° (082°)	6.49 THR08
MAPt KK103	465538.3N	0285426.5E	088.29° (082°)	0.00 THR08
MATF KK104	465555.3N	0290901.7E	268.33° (262°)	8.07 THR26