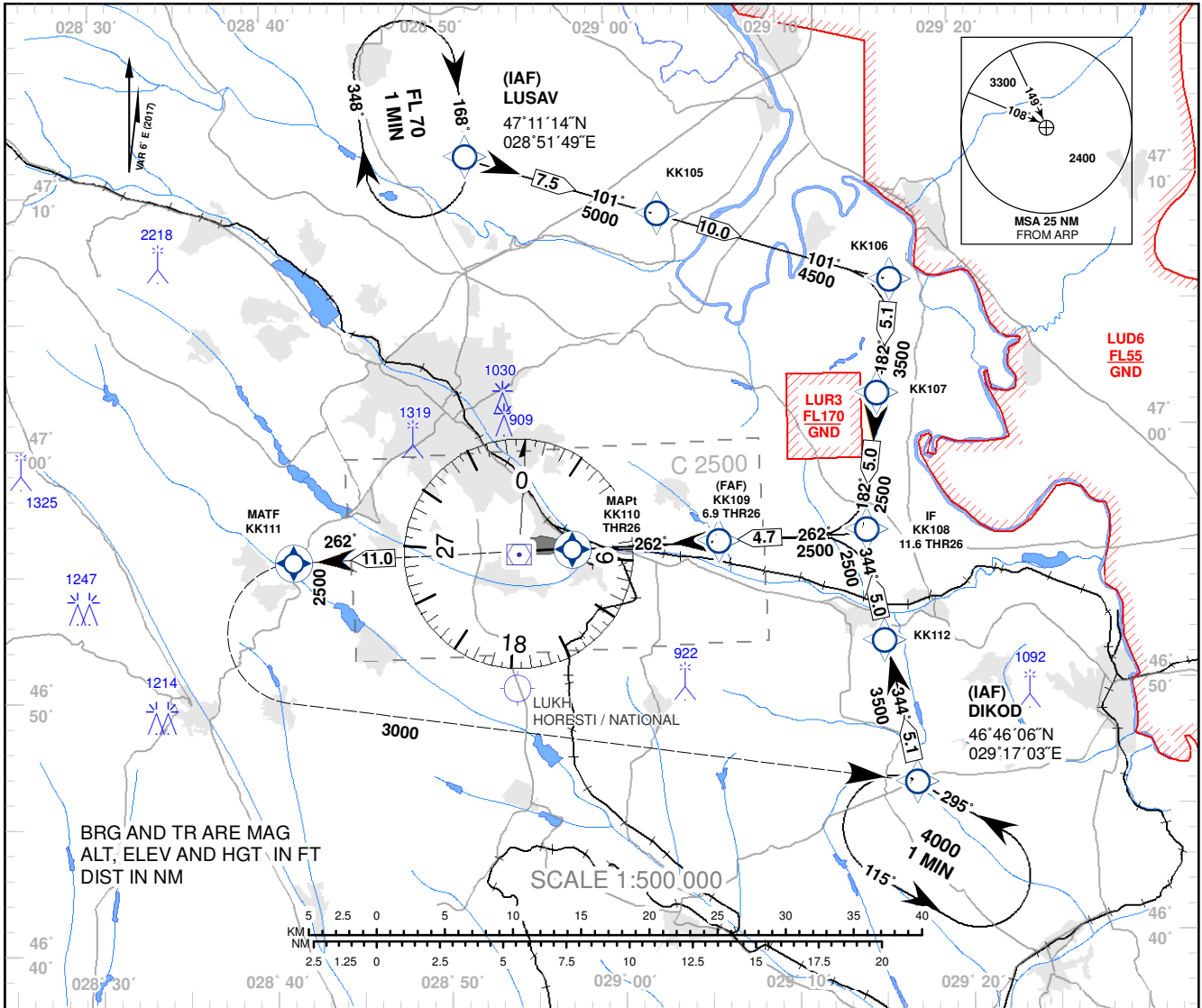


**INSTRUMENT APPROACH
CHART - ICAO**

AD ELEV 399 FT
HEIGHTS RELATED TO
THR RWY 26 ELEV 280 FT

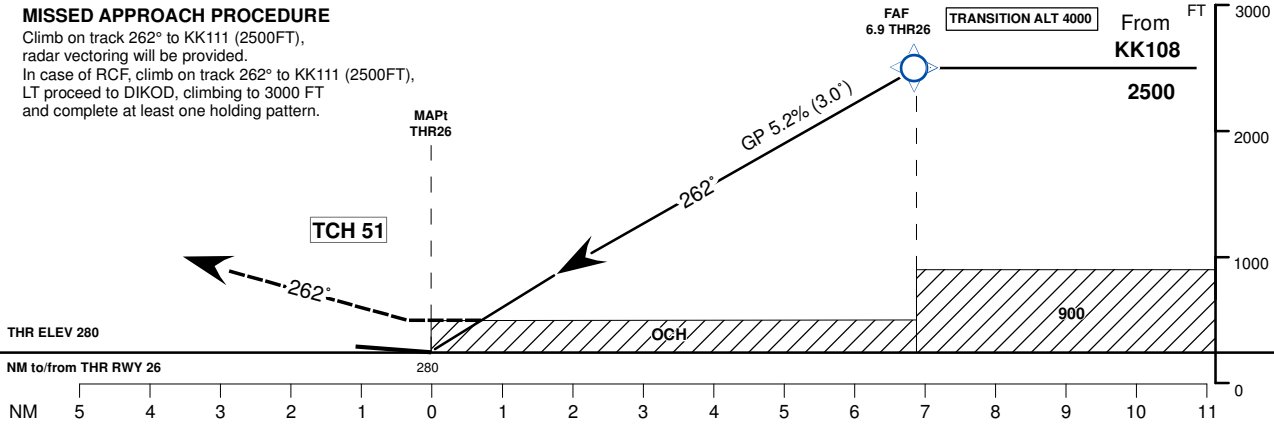
APP: 133.300 MHz
TWR: 118.100 MHz
ATIS: 125.225 MHz

**CHISINAU
RNAV(GNSS) RWY 26**



MISSED APPROACH PROCEDURE

Climb on track 262° to KK111 (2500FT), radar vectoring will be provided.
In case of RCF, climb on track 262° to KK111 (2500FT), LT proceed to DIKOD, climbing to 3000 FT and complete at least one holding pattern.



OCA (OCH)	A	B	C	D
LNAV only	530 (251)	530 (251)	530 (251)	530 (251)

DIST THR	7	6	5	4	3	2	1
ALTITUDE (Height)	2500 (2221)	2226 (1947)	1911 (1632)	1593 (1314)	1275 (996)	960 (681)	645 (366)

Timing not Authorized for Defining the MAPt

Ground Speed	KT	80	100	120	140	160	180
DISTANCE FAF-MAPt 6.9 NM	MIN : SEC	5:09	4:07	3:26	2:57	2:35	2:17
Rate of Descent (5.2%)	FT / MIN	420	530	630	740	840	950

Changes: MAG VAR Year Changed.

**INSTRUMENT APPROACH
CHART - ICAO**
**CHISINAU
RNAV(GNSS) RWY 26**

AERONAUTICAL DATA TABULATION					
POINT		LATITUDE	LONGITUDE	BEARING GEO° (MAG°)	DISTANCE (NM)
IAF	LUSAV	471114.0N	0285149.0E		
IAF	DIKOD	464606.0N	0291703.0E		
IF	KK108	465600.8N	0291408.9E	268.33° (263°)	11.57 THR26
FAF	KK109	465553.4N	0290717.7E	268.33° (263°)	6.88 THR26
MAPt	KK110	465541.8N	0285716.1E	268.33° (263°)	0.00 THR26
MATF	KK111	465521.5N	0284117.8E	088.29° (083°)	9.02 THR08
	KK105	470900.5N	0290217.9E		
TF	KK106	470600.8N	0291615.9E		
	KK107	470057.4N	0291511.5E		
	KK112	465106.6N	0291533.1E		