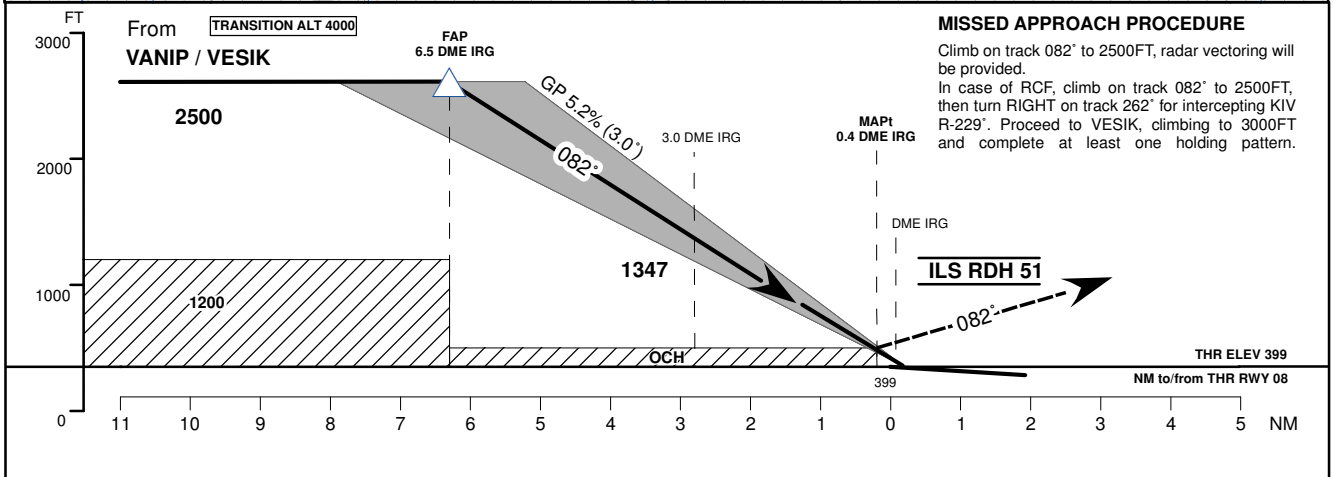
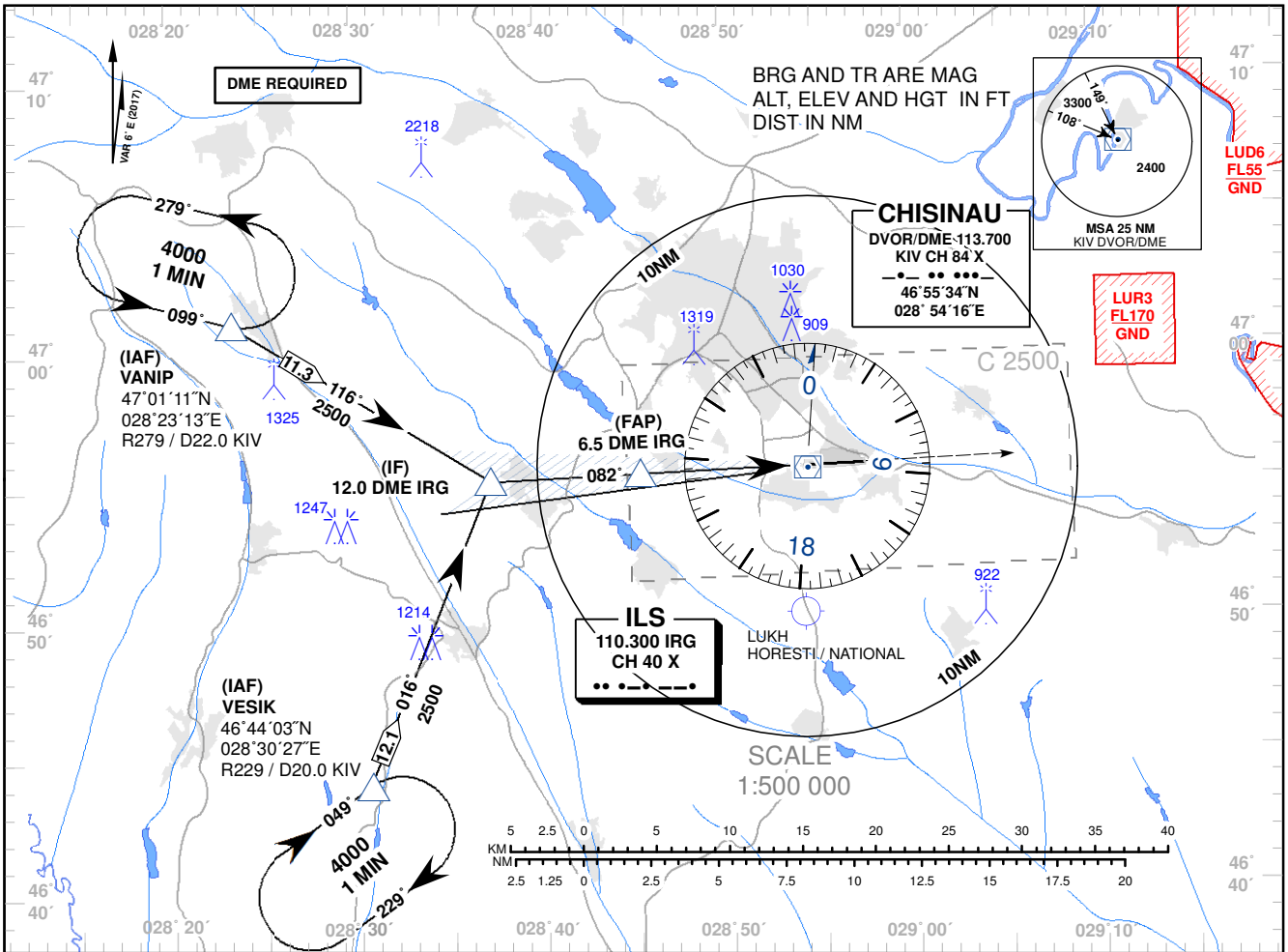


**INSTRUMENT APPROACH CHART - ICAO**

AD ELEV 399 FT  
HEIGHTS RELATED TO  
THR RWY 08 ELEV 399 FT

APP: 133.300 MHz  
TWR: 118.100 MHz  
ATIS: 125.225 MHz

**CHISINAU ILS CAT I & II RWY 08**



**MISSED APPROACH PROCEDURE**  
Climb on track 082° to 2500FT, radar vectoring will be provided.  
In case of RCF, climb on track 082° to 2500FT, then turn RIGHT on track 262° for intercepting KIV R-229°. Proceed to VESIK, climbing to 3000FT and complete at least one holding pattern.

OCA (OCH)	A	B	C	D
ILS CAT I	551 (152)	563 (164)	571 (172)	582 (183)
ILS CAT II	463 (64)	480 (81)	492 (93)	506 (107)

DME IRG	7	6	5	4	3	2	1
DIST THR	6.8	5.8	4.8	3.8	2.8	1.8	0.8
ALTITUDE (Height)	2500 (2101)	2295 (1896)	1980 (1581)	1662 (1263)	1347 (948)	1032 (633)	714 (315)

Timing not Authorized for Defining the MAPt.

GS	kt	80	100	120	140	160	180
DISTANCE FAP-MAPt 6.1 NM	MIN:SEC	4:35	3:40	3:04	2:37	2:18	2:02
Rate of Descent (5.2%)	FT/MIN	430	550	650	770	870	980

Changes: MAG VAR Year Changed.

INSTRUMENT APPROACH  
CHART - ICAOCHISINAU  
ILS CAT I & II RWY 08

AERONAUTICAL DATA TABULATION				
POINT	LATITUDE	LONGITUDE	BEARING GEO° (MAG°)	DISTANCE (NM)
IAF VANIP	470111.0N	0282313.0E	285.00° (279°) KIV	22.00 KIV
IAF VESIK	464403.0N	0283027.0E	235.00° (229°) KIV	20.00 KIV
IF	465515.5N	0283713.1E	088.29° (082°) IRG	12.00 DME IRG
FAP	465526.4N	0284512.9E	088.29° (082°) IRG	6.52 DME IRG
MAPt	465537.9N	0285411.2E	088.29° (082°) IRG	0.40 DME IRG