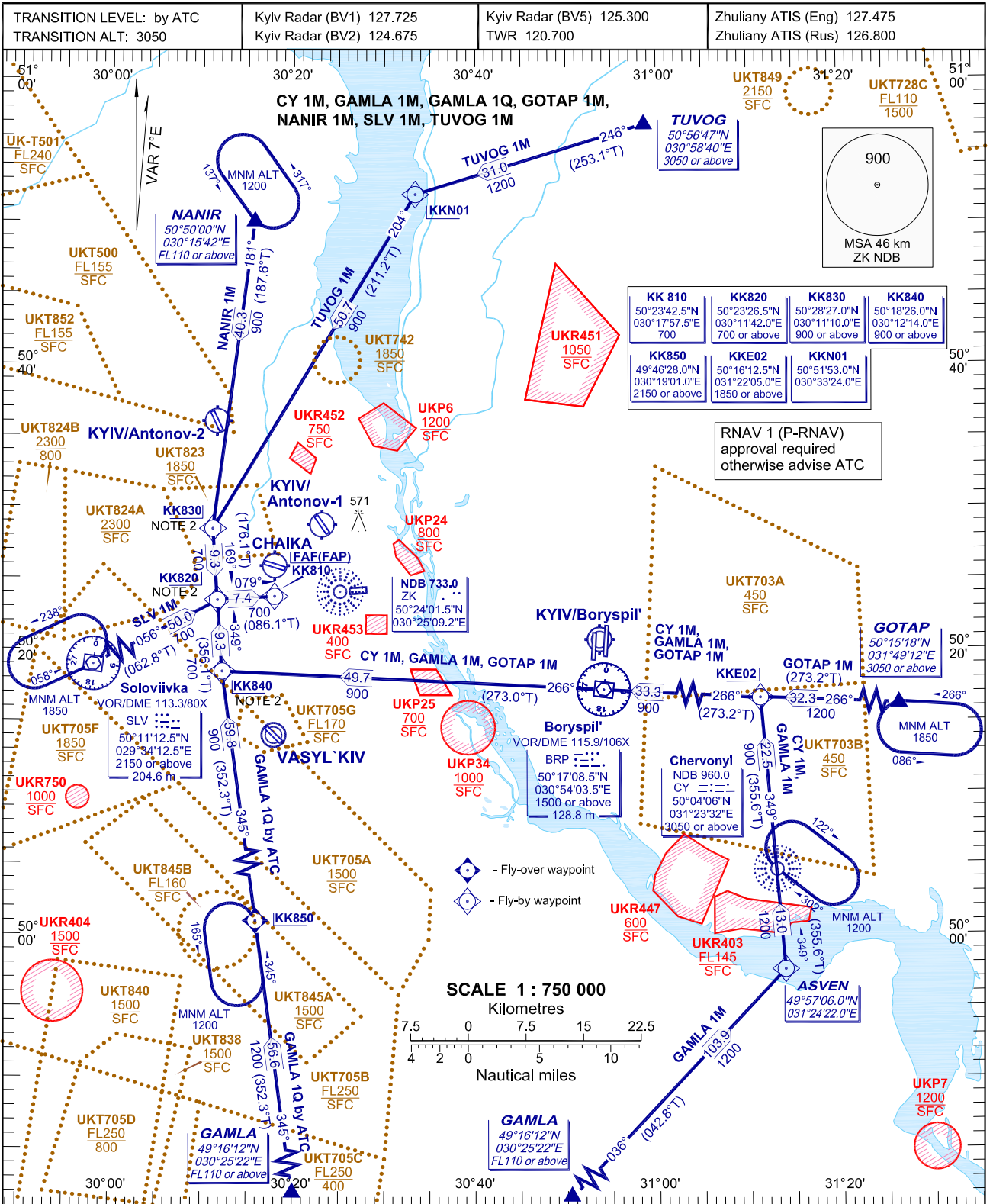


RNAV ARRIVAL PROCEDURE
TRANSITION TO FINAL APPROACH

KYIV/Zhuliany
RNAV(GNSS, DME/DME) RWY 08



NOTE:

1. Use of transition procedures only when cleared by ATC.
2. SPEED RESTRICTION: MAX IAS 407 km/h (220 kt) at KK820, KK830 and KK840.
3. SPEED RESTRICTION on transition is always mandatory unless cancelled by ATC.
4. Altitude assignments will be issued by ATC.
5. KK850 and CY are Fly-by for arrival procedures and Fly-over for holding patterns.

Continuous Descent Operations (CDO)

1. CDO are performed during period of low traffic density.
2. After receiving a "WHEN READY DESCEND TO (LEVEL)" or "DESCEND TO (LEVEL) AT PILOTS DISCRETION" clearance plan/optimize the vertical profile in order to apply CDO technique up to the FAP.
3. Specified minimum level at waypoint must be adhered to unless specifically cancelled by ATC.
4. Maintain MAX IAS 220 kt at a distance of 20 track miles from touchdown.
5. CDO may be requested by the pilot or offered by the controller.
6. For operational regulations refer to UKKK AD 2.22 and ENR 1.5.

BEARINGS AND TRACKS ARE MAGNETIC.
ALTITUDES, HEIGHTS AND ELEVATIONS ARE IN METRES,
DISTANCES ARE IN KILOMETRES

CHANGE: New UKT742.

RNAV ARRIVAL PROCEDURE				RNAV 1 (GNSS, DME/DME) RWY08			
Name	Path description	Fix identifier (Waypoint name)	Flyover	Course °M (°T)	Turn direction	Altitude	Speed limit
CY 1M Chervonyi ONE MIKE	IF	CY	-	-	-	+3050	-
	TF	KKE02	N	349 (355,6)	-	+1850	-
	TF	BRP	N	266 (273,2)	L	+1500	-
	TF	KK840	N	266 (273,0)	L	+900	407km/h (220kt)
	TF	KK820	N	349 (356,1)	R	+700	-
	TF	KK810	N	079 (086,1)	R	700	-
GAMLA 1M GAMLA ONE MIKE	IF	GAMLA	-	-	-	+FL110	-
	TF	ASVEN	N	036 (042,8)	-	-	-
	TF	CY	N	349 (355,6)	L	+3050	-
	TF	KKE02	N	349 (355,6)	-	+1850	-
	TF	BRP	N	266 (273,2)	L	+1500	-
	TF	KK840	N	266 (273,0)	L	+900	407km/h (220kt)
	TF	KK820	N	349 (356,1)	R	+700	-
GAMLA 1Q GAMLA ONE QUEBEC by ATC	TF	KK810	N	079 (086,1)	R	700	-
	IF	GAMLA	-	-	-	+FL110	-
	TF	KK850	N	345 (352,3)	-	+2150	-
	TF	KK840	N	345 (352,3)	-	+900	407km/h (220kt)
GOTAP 1M GOTAP ONE MIKE	TF	KK820	N	349 (356,1)	R	+700	-
	TF	KK810	N	079 (086,1)	R	700	-
	IF	GOTAP	-	-	-	+3050	-
	TF	KKE02	N	266 (273,2)	-	+1850	-
	TF	BRP	N	266 (273,2)	-	+1500	-
	TF	KK840	N	266 (273,0)	L	+900	407km/h (220kt)
NANIR 1M NANIR ONE MIKE	TF	KK820	N	349 (356,1)	R	+700	-
	TF	KK810	N	079 (086,1)	R	700	-
	TF	KK830	N	181 (187,6)	-	+900	407km/h (220kt)
	TF	KK820	N	169 (176,1)	L	+700	-
SLV 1M Soloviivka ONE MIKE	TF	KK810	N	079 (086,1)	R	700	-
	TF	KK820	N	056 (062,8)	-	+700	407km/h (220kt)
	IF	SLV	-	-	-	+2150	-
TUVOG 1M TUVOG ONE MIKE	TF	KK850	N	246 (253,1)	-	-	-
	TF	KK830	N	204 (211,2)	L	+900	407km/h (220kt)
	TF	KK820	N	169 (176,1)	L	+700	-
	TF	KK810	N	079 (086,1)	L	700	-
	IF	TUVOG	-	-	-	+3050	-

RNAV HOLDINGS

Fix identifier (Waypoint name)	Inbound Track °M (°T)	Turn direction	Minimum Altitude	Time MIN	Distance	Speed limit
KK850	345 (352,3)	L	1200	1	-	-
CY	302 (309,0)	R	1200	1	-	-
GOTAP	266 (273,0)	L	1850	1	-	-
NANIR	137 (144,0)	L	1200	1	-	-
SLV	058 (065,0)	L	1850	1	-	-

WAYPOINTS

Waypoint name	Coordinates		Waypoint name	Coordinates	
KK810 (FAF/FAP)	502342.5N	0301757.5E	BRP	501708.5N	0305403.5E
KK820	502326.5N	0301142.0E	CY	500406.0N	0312332.0E
KK830	502827.0N	0301110.0E	SLV	501112.5N	0293412.5E
KK840	501826.0N	0301214.0E	GAMLA	491612.0N	0302522.0E
KK850	494628.0N	0301901.0E	GOTAP	501518.0N	0314912.0E
KKE02	501612.5N	0312205.0E	NANIR	505000.0N	0301542.0E
KKN01	505153.0N	0303324.0E	TUVOG	505647.0N	0305840.0E
ASVEN	495706.0N	0312422.0E			

INTENTIONALLY LEFT BLANK