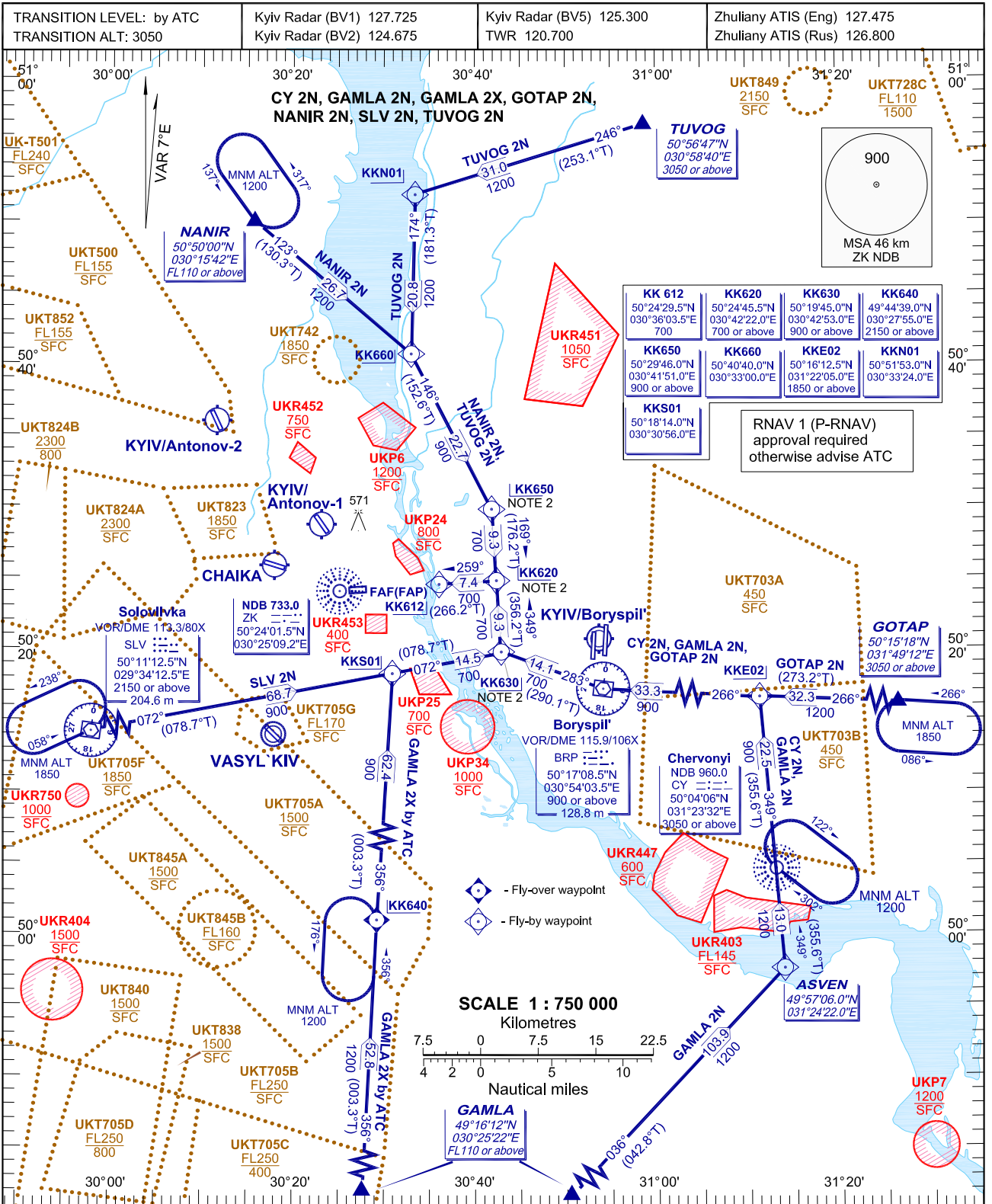


RNAV ARRIVAL PROCEDURE
TRANSITION TO FINAL APPROACH

KYIV/Zhuliany
RNAV(GNSS, DME/DME)RWY 26



NOTE:

1. Use of transition procedures only when cleared by ATC.
2. SPEED RESTRICTION: MAX IAS 407 km/h (220 kt) at KK620, KK630 and KK650.
3. SPEED RESTRICTION on transition is always mandatory unless cancelled by ATC.
4. Altitude assignments will be issued by ATC.
5. KK640 and CY are Fly-by for arrival procedures and Fly-over for holding patterns.

Continuous Descent Operations (CDO)

1. CDO are performed during period of low traffic density.
2. After receiving a "WHEN READY DESCEND TO (LEVEL)" or "DESCEND TO (LEVEL) AT PILOTS DISCRETION" clearance plan/optimize the vertical profile in order to apply CDO technique up to the FAP.
3. Specified minimum level at waypoint must be adhered to unless specifically cancelled by ATC.
4. Maintain MAX IAS 220 kt at a distance of 20 track miles from touchdown.
5. CDO may be requested by the pilot or offered by the controller.
6. For operational regulations refer to UKKK AD 2.22 and ENR 1.5.

BEARINGS AND TRACKS ARE MAGNETIC.
ALTITUDES, HEIGHTS AND ELEVATIONS ARE IN METRES,
DISTANCES ARE IN KILOMETRES

CHANGE: New UKT742.

RNAV ARRIVAL PROCEDURE				RNAV 1 (GNSS, DME/DME) RWY26			
Name	Path description	Fix identifier (Waypoint name)	Flyover	Course °M (°T)	Turn direction	Altitude	Speed limit
CY 2N Chervonyi TWO NOVEMBER	IF	CY	-	-	-	+3050	-
	TF	KKE02	N	349 (355,6)	-	+1850	-
	TF	BRP	N	266 (273,2)	L	+900	-
	TF	KK630	N	283 (290,1)	R	+900	407km/h (220kt)
	TF	KK620	N	349 (356,2)	R	+700	-
	TF	KK612	N	259 (266,2)	L	700	-
GAMLA 2N GAMLA TWO NOVEMBER	IF	GAMLA	-	-	-	+FL110	-
	TF	ASVEN	N	036 (042,8)	-	-	-
	TF	CY	N	349 (355,6)	L	+3050	-
	TF	KKE02	N	349 (355,6)	-	+1850	-
	TF	BRP	N	266 (273,2)	L	+900	-
	TF	KK630	N	283 (290,1)	R	+900	407km/h (220kt)
	TF	KK620	N	349 (356,2)	R	+700	-
	TF	KK612	N	259 (266,2)	L	700	-
GAMLA 2X GAMLA TWO X-RAY by ATC	IF	GAMLA	-	-	-	+FL110	-
	TF	KK640	N	356 (003,3)	-	+2150	-
	TF	KKS01	N	356 (003,3)	-	-	-
	TF	KK630	N	072 (078,7)	R	+900	407km/h (220kt)
	TF	KK620	N	349 (356,2)	L	+700	-
	TF	KK612	N	259 (266,2)	L	700	-
GOTAP 2N GOTAP TWO NOVEMBER	IF	GOTAP	-	-	-	+3050	-
	TF	KKE02	N	266 (273,2)	-	+1850	-
	TF	BRP	N	266 (273,2)	-	+900	-
	TF	KK630	N	283 (290,1)	R	+900	407km/h (220kt)
	TF	KK620	N	349 (356,2)	R	+700	-
	TF	KK612	N	259 (266,2)	L	700	-
NANIR 2N NANIR TWO NOVEMBER	IF	NANIR	-	-	-	+FL110	-
	TF	KK660	N	123 (130,3)	-	-	-
	TF	KK650	N	146 (152,6)	R	+900	407km/h (220kt)
	TF	KK620	N	169 (176,2)	R	+700	-
	TF	KK612	N	259 (266,2)	R	700	-
SLV 2N Soloviivka TWO NOVEMBER	IF	SLV	-	-	-	+2150	-
	TF	KKS01	N	072 (078,7)	-	-	-
	TF	KK630	N	072 (078,7)	-	+900	407km/h (220kt)
	TF	KK620	N	349 (356,2)	L	+700	-
	TF	KK612	N	259 (266,2)	L	700	-
TUVOG 2N TUVOG TWO NOVEMBER	IF	TUVOG	-	-	-	+3050	-
	TF	KKN01	N	246 (253,1)	-	-	-
	TF	KK660	N	174 (181,3)	L	-	-
	TF	KK650	N	146 (152,6)	L	+900	407km/h (220kt)
	TF	KK620	N	169 (176,2)	R	+700	-
	TF	KK612	N	259 (266,2)	R	700	-

RNAV HOLDINGS

Fix identifier (Waypoint name)	Inbound Track °M (°T)	Turn direction	Minimum Altitude	Time MIN	Distance	Speed limit
KK640	356 (003,3)	L	1200	1	-	-
CY	302 (309,0)	R	1200	1	-	-
GOTAP	266 (273,0)	L	1850	1	-	-
NANIR	137 (144,0)	L	1200	1	-	-
SLV	058 (065,0)	L	1850	1	-	-

WAYPOINTS

Waypoint name	Coordinates		Waypoint name	Coordinates	
KK612 (FAF/FAP)	502429.5N	0303606.5E	ASVEN	495706.0N	0312422.0E
KK620	502445.5N	0304222.0E	BRP	501708.5N	0305403.5E
KK630	501945.0N	0304253.0E	CY	500406.0N	0312332.0E
KK640	494439.0N	0302755.0E	SLV	501112.5N	0293412.5E
KK650	502946.0N	0304151.0E	GAMLA	491612.0N	0302522.0E
KK660	504040.0N	0303300.0E	GOTAP	501518.0N	0314912.0E
KKS01	501814.0N	0303056.0E	NANIR	505000.0N	0301542.0E
KKE02	501612.5N	0312205.0E	TUVOG	505647.0N	0305840.0E
KKN01	505153.0N	0303324.0E			

INTENTIONALLY LEFT BLANK