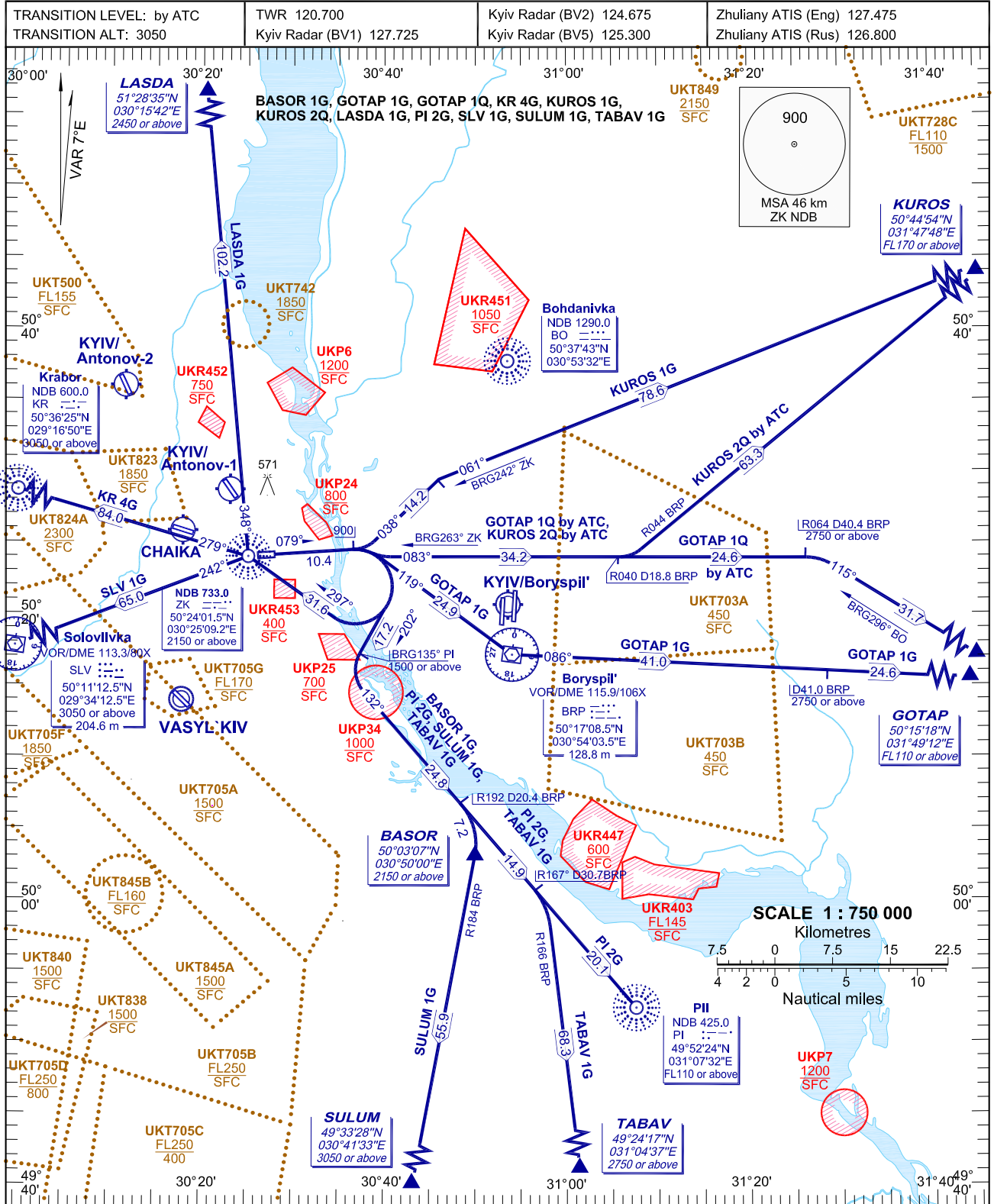


STANDARD DEPARTURE CHART
INSTRUMENT (SID)-ICAO

KYIV/Zhuliany
RWY 08



NOTE:

1. Statistical data of ACFT performance are used for determination of the average flight path of the SID procedures.
2. If unable to comply SID procedures advise ATC.

CHANGE: New UKT742.

BEARINGS AND TRACKS ARE MAGNETIC,
ALTITUDES, HEIGHTS AND ELEVATIONS ARE IN METRES,
DISTANCES ARE IN KILOMETRES

SID RWY 08

Designator	Route	Altitude	Remarks
BASOR 1G BASOR ONE GOLF	On track 079° climb to 900, turn RIGHT on track 202° to intercept BRG135° PI NDB, turn LEFT on track 132° to PI NDB, then on R192 D20,4 BRP VOR/DME turn RIGHT on R184 BRP VOR to BASOR	Cross BRG135° PI NDB at 1500 or above, BASOR at 2150 or above	nil
GOTAP 1G GOTAP ONE GOLF	On track 079° climb to 900, turn RIGHT on track 119° to BRP VOR/DME, then turn LEFT on track 086° from BRP VOR/DME to GOTAP	Cross D41.0 BRP DME at 2750 or above, GOTAP at FL110 or above	nil
GOTAP 1Q GOTAP ONE QUEBEC	On track 079° climb to 900, turn RIGHT on track 083° (BRG263° ZK NDB) to R064 D40,4 BRP VOR/DME, then turn RIGHT on track 115° (BRG296° BO NDB) to GOTAP	Cross R064° D40,4 BRP VOR/DME at 2750 or above, GOTAP at FL110 or above	By ATC
KR 4G Krabor FOUR GOLF	On track 079° climb to 900, turn RIGHT on track 297° to ZK NDB, then turn LEFT on track 279° from ZK NDB to KR NDB	Cross ZK NDB at 2150 or above, KR NDB at 3050 or above	nil
KUROS 1G KUROS ONE GOLF	On track 079° climb to 900, turn LEFT on track 038° to intercept BRG242° ZK NDB, then on track 061° (BRG242° ZK NDB) to KUROS	Cross KUROS at FL170 or above	nil
KUROS 2Q KUROS TWO QUEBEC	On track 079° climb to 900, turn RIGHT on track 083° (BRG263° ZK NDB) to R040 D18.8 BRP VOR/DME, then turn LEFT on R044° BRP VOR to KUROS	Cross KUROS at FL170 or above	By ATC
LASDA 1G LASDA ONE GOLF	On track 079° climb to 900, turn RIGHT on track 297° to ZK NDB, then turn RIGHT on track 348° from ZK NDB to LASDA	Cross ZK NDB at 2150 or above, LASDA at 2450 or above	nil
PI 2G Pii TWO GOLF	On track 079° climb to 900, turn RIGHT on track 202° to intercept BRG135° PI NDB, then turn LEFT on track 132° to PI NDB	Cross BRG135° PI NDB at 1500 or above, PI NDB at FL110 or above	nil
SLV 1G Soloviivka ONE GOLF	On track 079° climb to 900, turn RIGHT on track 297° to ZK NDB, then turn LEFT on track 242° from ZK NDB to SLV VOR/DME	Cross ZK NDB at 2150 or above, SLV VOR/DME at 3050 or above	nil
SULUM 1G SULUM ONE GOLF	On track 079° climb to 900, turn RIGHT on track 202° to intercept BRG135° PI NDB, turn LEFT on track 132° to PI NDB, then on R192 D20,4 BRP VOR/DME turn RIGHT on R184 BRG VOR to SULUM	Cross BRG135° PI NDB at 1500 or above, SULUM at 3050 or above	nil
TABAV 1G TABAV ONE GOLF	On track 079° climb to 900, turn RIGHT on track 202° to intercept BRG135° PI NDB, turn LEFT on track 132° to PI NDB, then on R167 D30,7 BRP VOR/DME turn RIGHT on R166 BRP VOR to TABAV	Cross BRG135° PI NDB at 1500 or above, TABAV at 2750 or above	nil