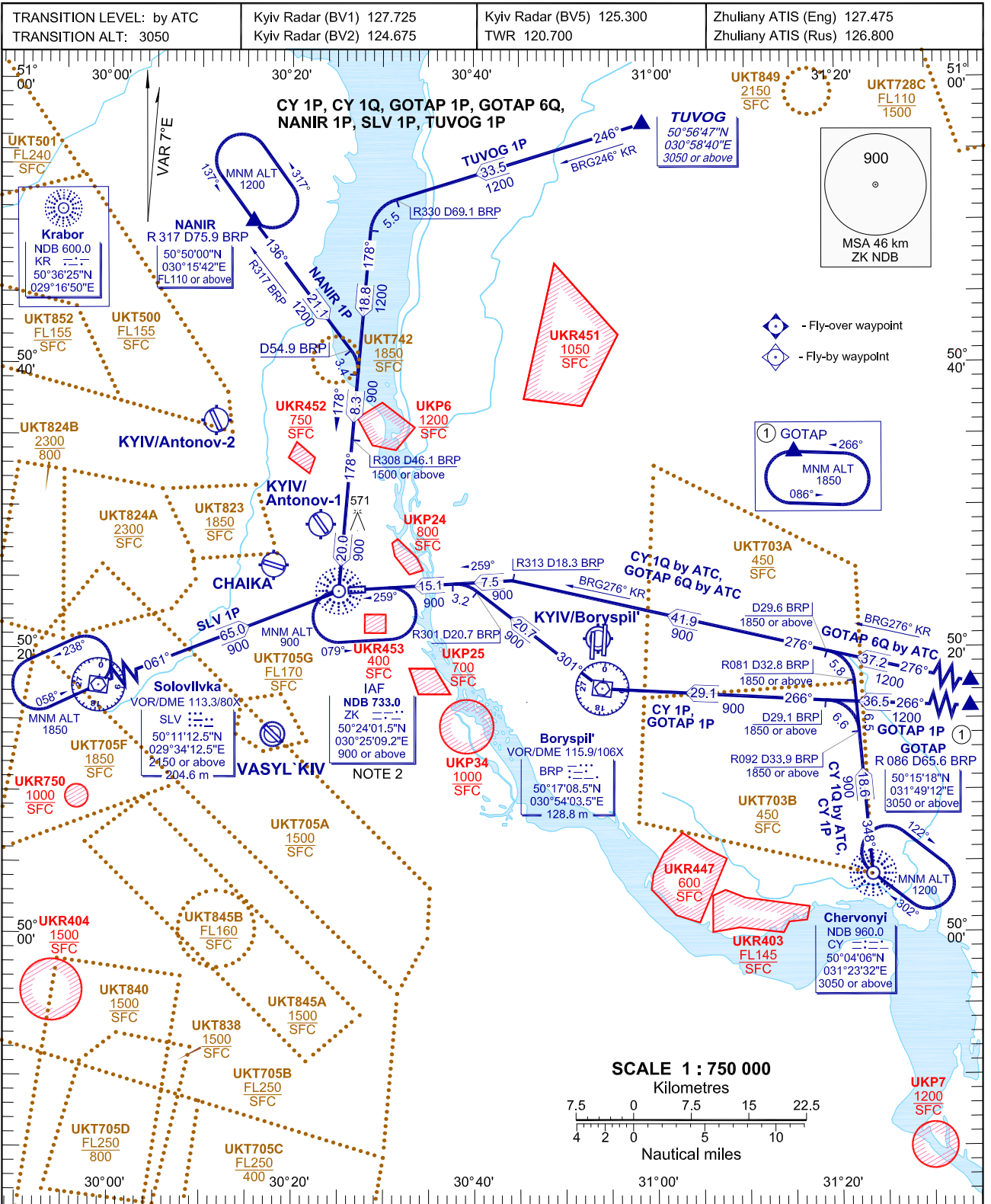


STANDARD ARRIVAL CHART
INSTRUMENT (STAR)-ICAO

KYIV/Zhuliany
RWY 08/26



NOTE:

1. SPEED RESTRICTION: 56 km (30 nm) from ARP KYIV/Zhuliany MAX IAS 465 km/h (250 kt) at or BLW FL100 (3050 m).
2. SPEED RESTRICTION: MAX IAS 426 km/h (230 kt) at IAF ZK NDB.
3. Descend: Actual descend clearances will be as directed by ATC.
4. Vectoring: Vectoring will be used for sequencing to final when necessary.
5. Additionally: ATC may request specific speeds for accurate spacing. Comply with any level or speed adjustment as promptly as feasible within operational constraints. If a level or speed change for aircraft performance reasons or weather conditions is necessary, advise ATC.

BEARINGS AND TRACKS ARE MAGNETIC.
ALTITUDES, HEIGHTS AND ELEVATIONS ARE IN METRES,
DISTANCES ARE IN KILOMETRES

CHANGE: New UKT742.

STAR RWY 08/26

STAR RWY 08

Designator	Route	Altitude	Remarks
CY 1P Chervonyi ONE PAPA	On track 348° from CY NDB to R092 D33,9 BRP VOR/DME, turn LEFT on track 266° to BRP VOR/DME, turn RIGHT on track 301° from BRP VOR/DME to R301 D20,7 BRP VOR/DME, turn LEFT on track 259° to IAF ZK NDB, then according to approach chart	Cross CY NDB at 3050 or above, R092 D33,9 BRP VOR/DME at 1850 or above, IAF ZK NDB at 900 or above	MAX IAS 426 km/h (230 kt) at IAF ZK NDB
CY 1Q Chervonyi ONE QUEBEC	On track 348° from CY NDB to R081 D32,8 BRP VOR/DME, turn LEFT on track 276° (BRG276° KR NDB) to R313 D18,3 BRP VOR/DME, turn LEFT on track 259° to IAF ZK NDB, then according to approach chart	Cross CY NDB at 3050 or above, R081 D32,8 BRP VOR/DME at 1850 or above, IAF ZK NDB at 900 or above	By ATC. MAX IAS 426 km/h (230 kt) at IAF ZK NDB
GOTAP 1P GOTAP ONE PAPA	On track 266° to BRP VOR/DME, turn RIGHT on track 301° from BRP VOR/DME to R301 D20,7 BRP VOR/DME, turn LEFT on track 259° to IAF ZK NDB, then according to approach chart	Cross GOTAP at 3050 or above, D29,1 BRP DME at 1850 or above, IAF ZK NDB at 900 or above	MAX IAS 426 km/h (230 kt) at IAF ZK NDB
GOTAP 6Q GOTAP SIX QUEBEC	On track 276° (BRG276° KR NDB) to R313 D18,3 BRP VOR/DME, turn LEFT on track 259° to IAF ZK NDB, then according to approach chart	Cross GOTAP at 3050 or above, D29,6 BRP DME at 1850 or above, IAF ZK NDB at 900 or above	By ATC. MAX IAS 426 km/h (230 kt) at IAF ZK NDB
NANIR 1P NANIR ONE PAPA	On track 136° (R317 BRP VOR) to D54,9 BRP DME, turn RIGHT on track 178° to IAF ZK NDB, then according to approach chart	Cross NANIR at FL110 or above, R308 D46,1 BRP VOR/DME at 1500 or above, IAF ZK NDB at 900 or above	MAX IAS 426 km/h (230 kt) at IAF ZK NDB
SLV 1P Soloviivka ONE PAPA	On track 061° from SLV VOR/DME to IAF ZK NDB, then according to approach chart	Cross SLV VOR/DME at 2150 or above, IAF ZK NDB at 900 or above	MAX IAS 426 km/h (230 kt) at IAF ZK NDB
TUVOG 1P TUVOG ONE PAPA	On track 246° (BRG246° KR NDB) to R330 D69,1 BRP VOR/DME, turn LEFT on track 178° to IAF ZK NDB, then according to approach chart	Cross TUVOG at 3050 or above, R308 D46,1 BRP VOR/DME at 1500 or above, IAF ZK NDB at 900 or above	MAX IAS 426 km/h (230 kt) at IAF ZK NDB